

Navigraph voor Flight Simulation

Harm Meertens

LaMaMa 26 september 2022



harm.meertens@home.nl



Navigraph voor Flight Simulation

Waarom heb je Navigraph data nodig.

Wat doet Navigraph?

Navigraph biedt updated

- ☐ airport charts,
- ☐ enroute charts,
- ☐ navigational databases

Voor het realisme in het vliegen met

Microsoft Flight Simulator, Prepar3D en X-Plane.

De data is verkregen van Jeppesen

De data, wordt omgezet in data formats voor diverse Flight Simulatoren.

Waarom heb je Navigraph data nodig?

To reflect current conditions in aviation in your flight simulator.

This is important for

- ❑ **realism**
- ❑ to share an **virtual airspace** when flying in **network with other pilots and controllers** together using different Flight Simulators and add-on software.

As real as it gets

The **data** provided by Navigraph is

- ☐ current

- ☐ updated every 28 days

according to the AIRAC cycle - just like in the aviation industry

You will be flying your simulator in the **most realistic conditions**

Up to Date Charts (1)

The airport diagrams in Navigraph Charts are very useful when **taxiing the aircraft from the gate to the runway**.

The **departure procedures** in Navigraph Charts tells you how to fly from the runway to the airway leading you in the direction you want to fly.

Navigraph Charts also has a **route calculator** which tells you which sequence of waypoints you need to pass in order to get to the arrival airport.

The **route is visualized** on the enroute chart and there is also a **Moving Map function** which plots the current location of your aircraft.

Up to Date Charts (2)

As you get ready to land Navigraph has charts for **arrival and approach procedures**.

These tell you which waypoints you need to pass, along with speed and altitude restrictions, and information about available lights and landing systems at the destination airport.

Information about **frequencies for radio and navigational aids**

- For contact with air traffic control,
- For tuning in on navigational aids,
- For aligning yourself on the glide slope into the destination airport.

LFPG/09 NURMO5K NURMO UN874 VEKIN UN873 ADUTO N873 FERDI Y18 DENUT DENUT3A EHAM/36R

AIRPORT/RUNWAY DEPARTURE

ROUTE

ARRIVAL

APPROACH AIRPORT / RUNWAY

NAVIGATIE



Charts Desktop

LFPG/09 NURMO5K NURMO UN874 VEKIN UN873 ADUTO N873 FERDI Y18 DENUT DENUT3A EHAM/36R

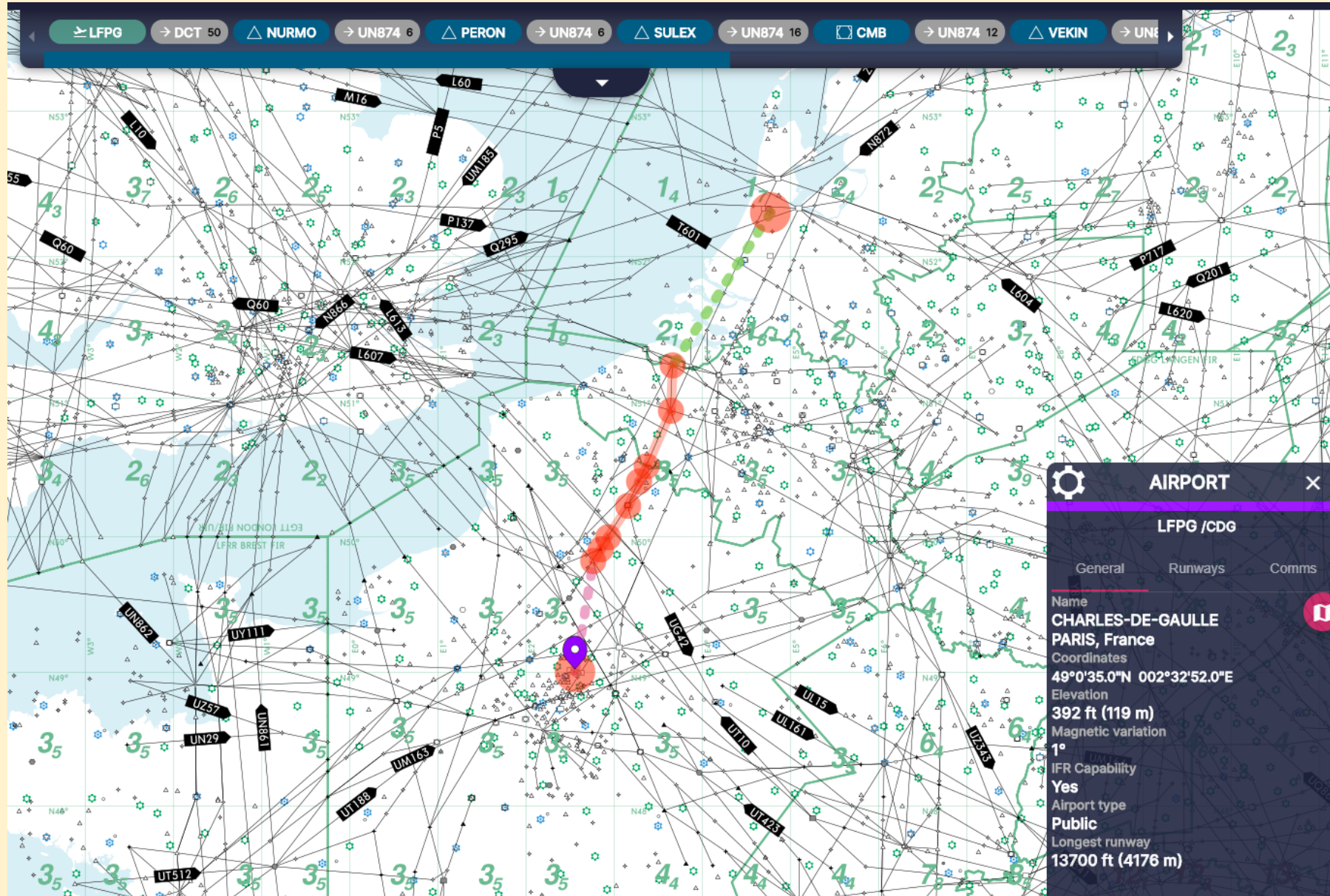
AIRPORT/RUNWAY DEPARTURE

ROUTE

ARRIVAL

APPROACH AIRPORT / RUNWAY

Up to Date
Charts



Up to Date Charts

LFPG/09

NURMO5K

NURMO

UN874

VEKIN

UN873

ADUTO

N873

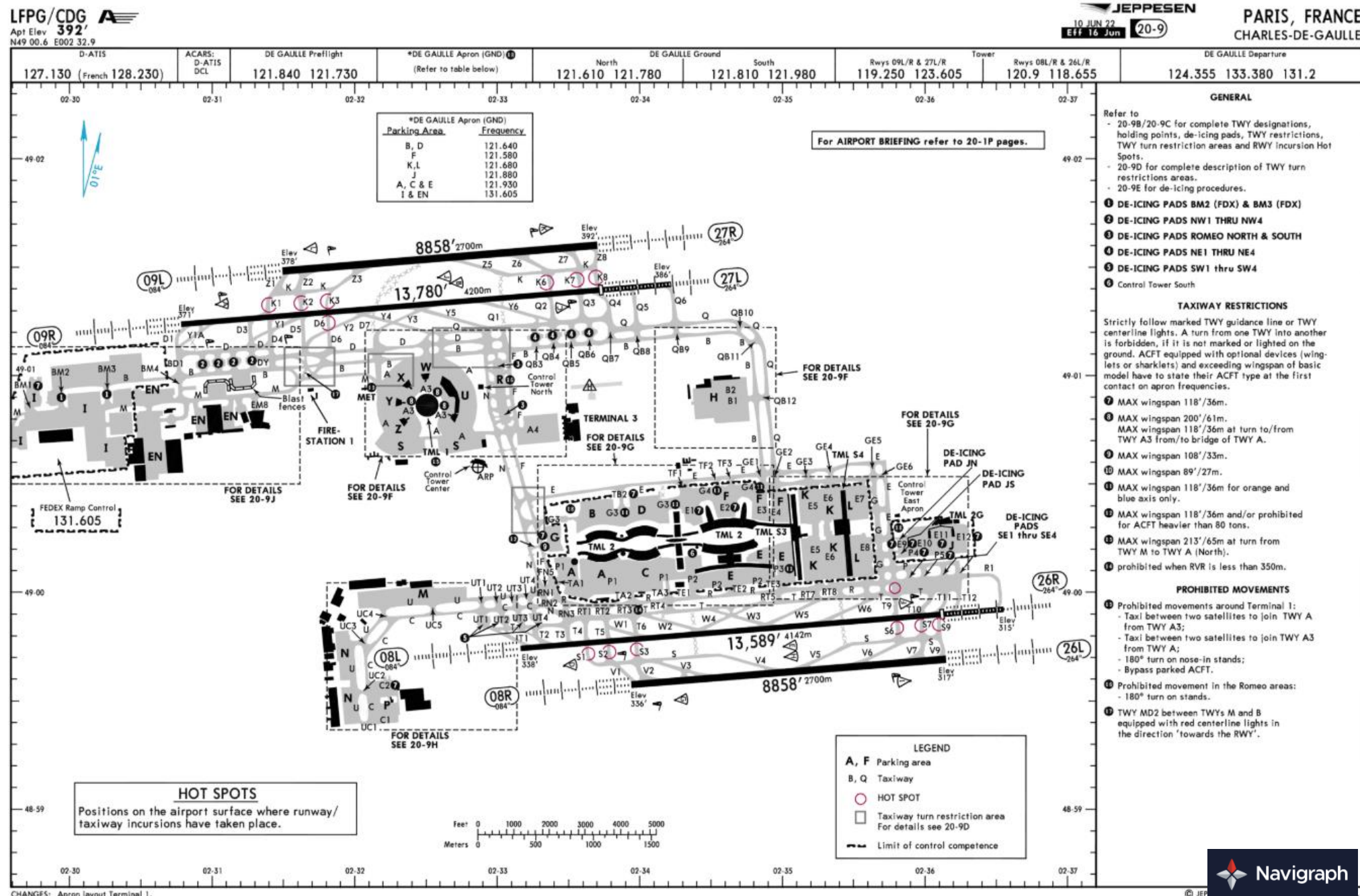
FERDI

Y18

DENUT

DENUT3A

EHAM/36R



EHAM/36R



Up to Date
Charts

LFPG/09

NURMO5K

NURMO

UN874

VEKIN

UN873

ADUTO

N873

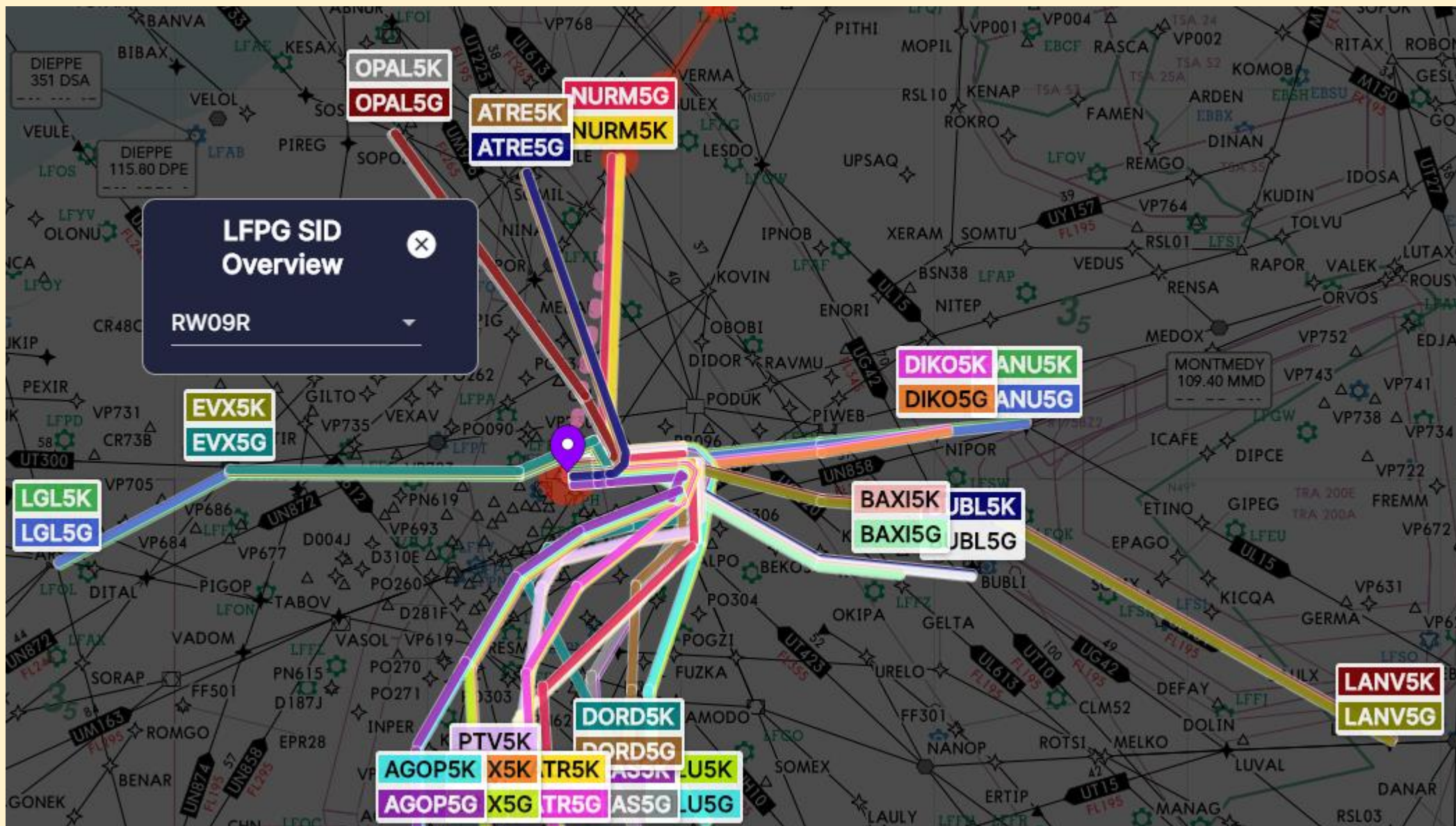
FERDI

Y18

DENUT

DENUT3A

EHAM/36R



EHAM/36R



Up to Date Charts

LFPG/09

NURMO5K

NURMO

UN874

VEKIN

UN873

ADUTO

N873

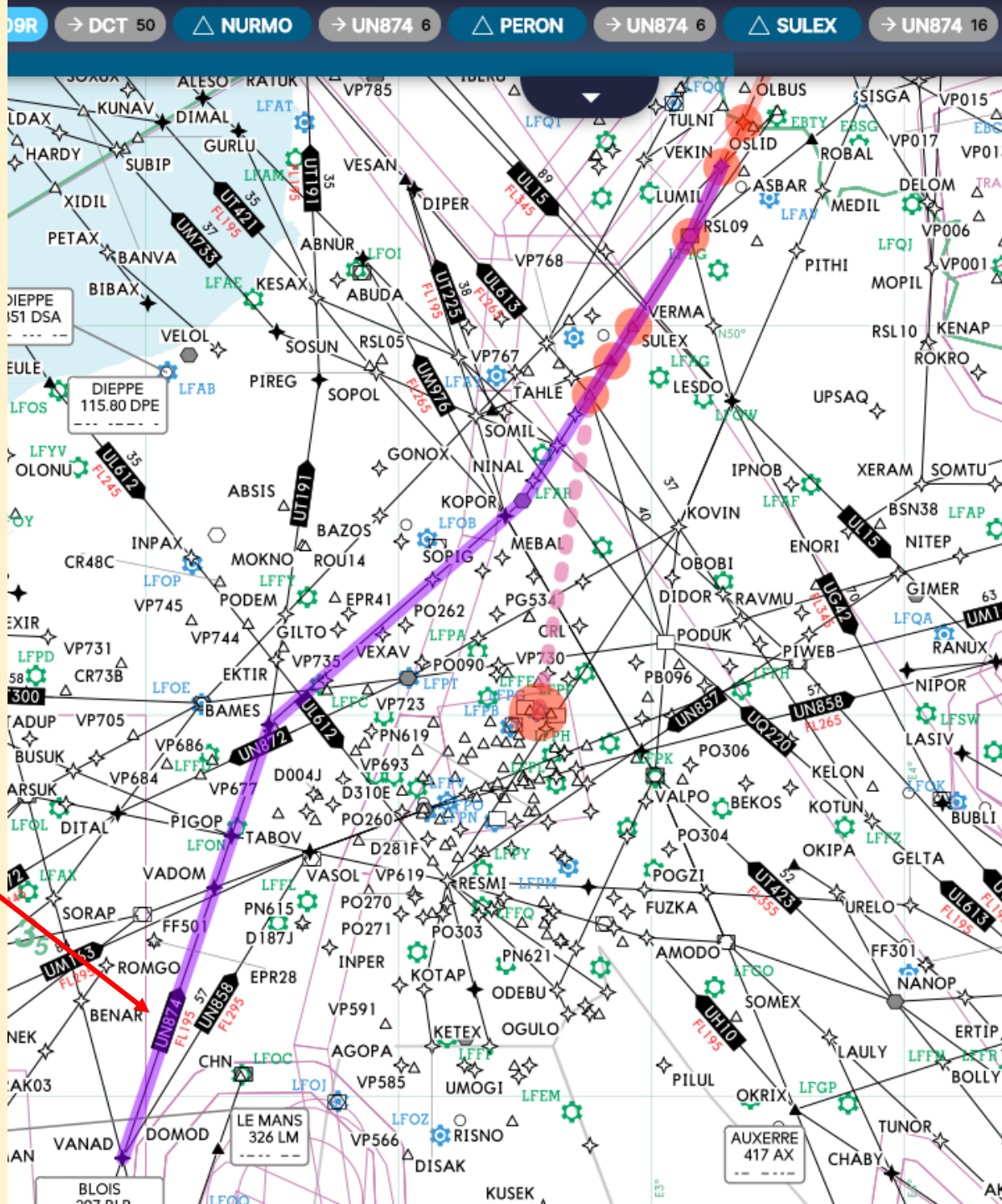
FERDI

Y18

DENUT

DENUT3A

EHAM/36R



Up to Date
Charts

LFPG/09

NURMO5K

NURMO

UN874

VEKIN

UN873

ADUTO

N873

FERDI

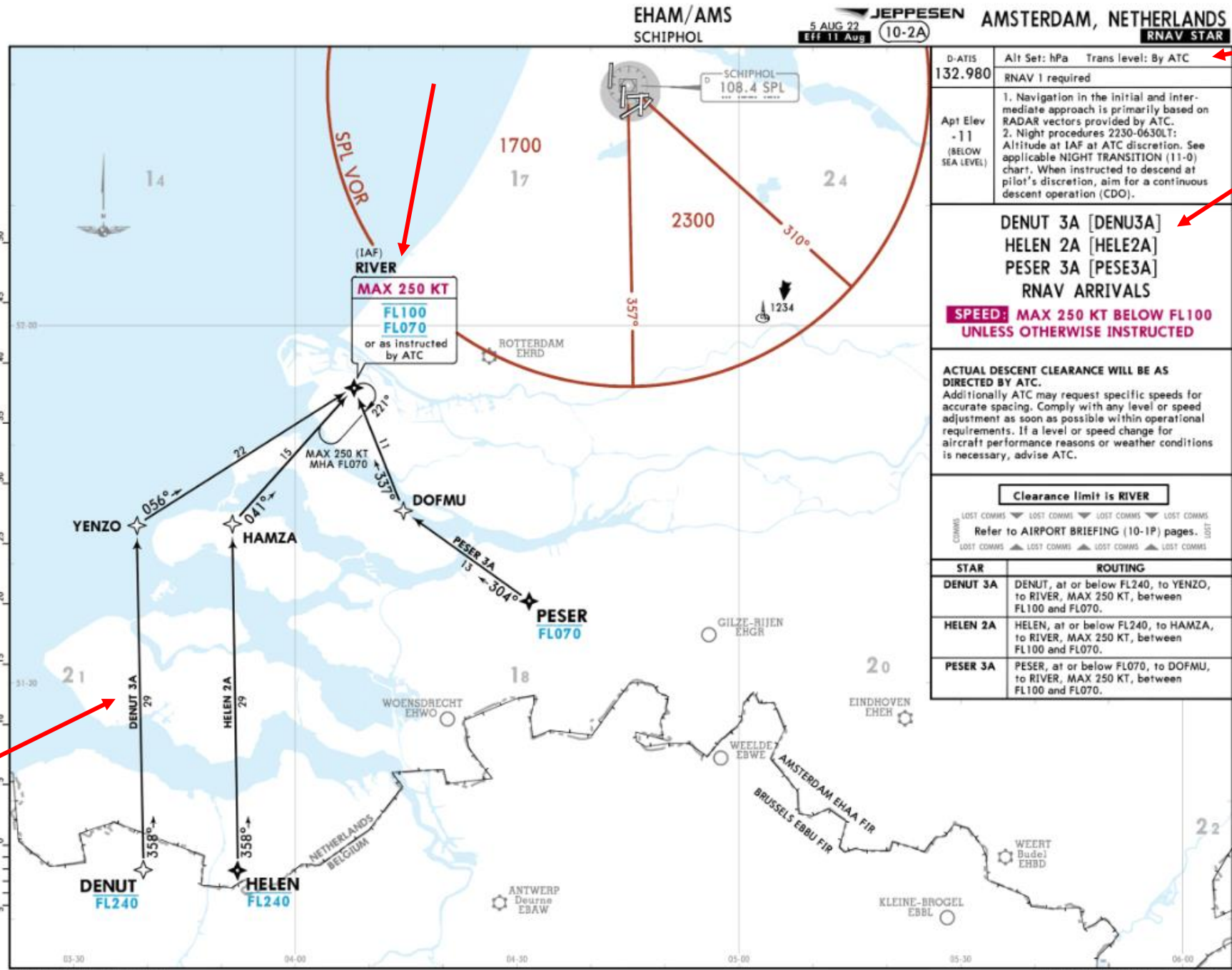
Y18

DENUT

DENUT3A

EHAM/36R

NAVGRAPH CHARTS INTENDED FOR FLIGHT SIMULATION ONLY - NOT FOR NAVIGATIONAL USE



Up to Date Charts

LFPG/09

NURMO5K

NURMO

UN874

VEKIN

UN873

ADUTO

N873

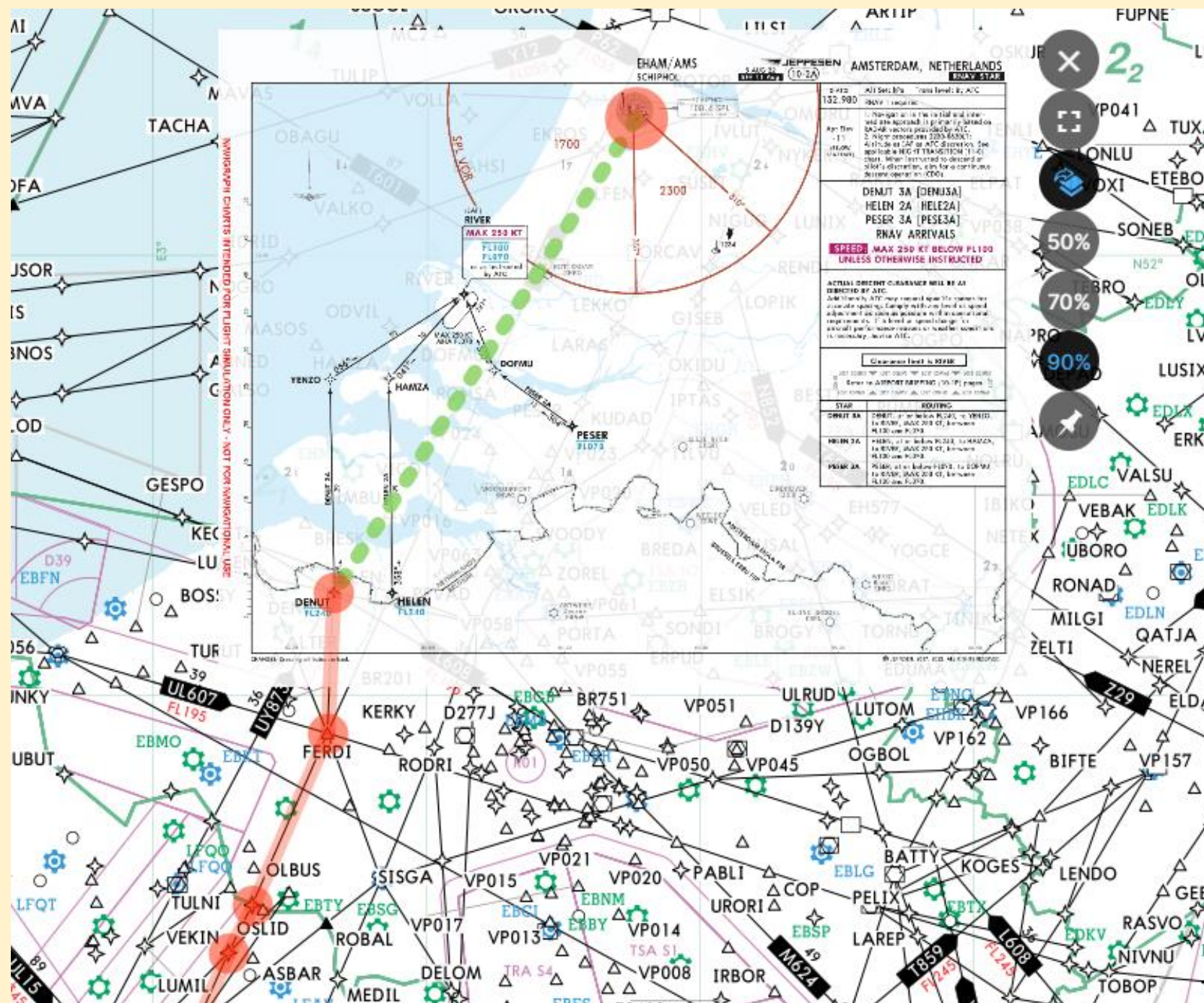
FERDI

Y18

DENUT

DENUT3A

EHAM/36R



Up to Date Charts

LFPG/09

NURMO5K

NURMO

UN874

VEKIN

UN873

ADUTO

N873

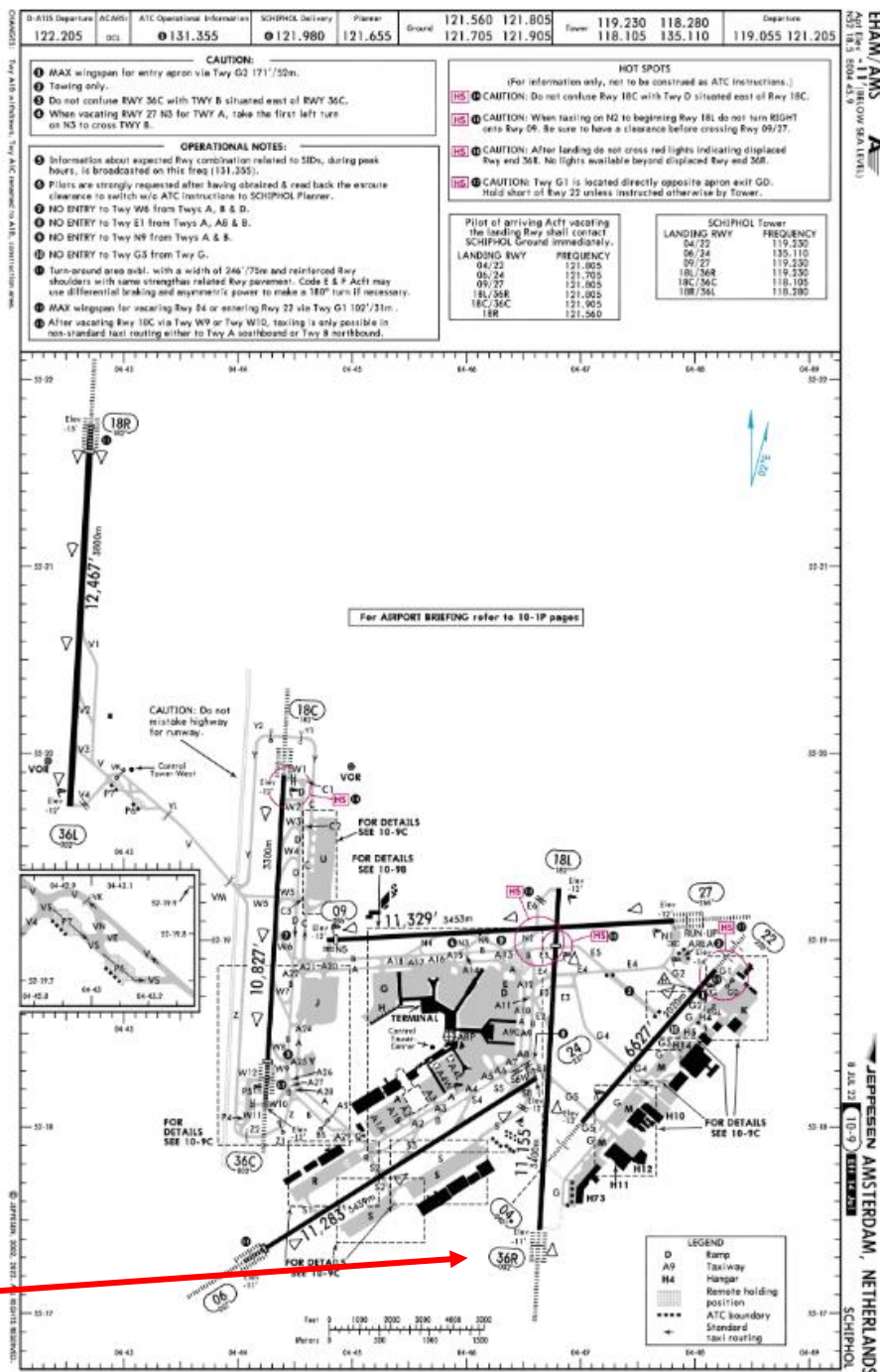
FERDI

Y18

DENUT

DENUT3A

EHAM/36R



Up to Date
Charts

LFPG/09

NURMO5K

NURMO

UN874

VEKIN

UN873

ADUTO

N873

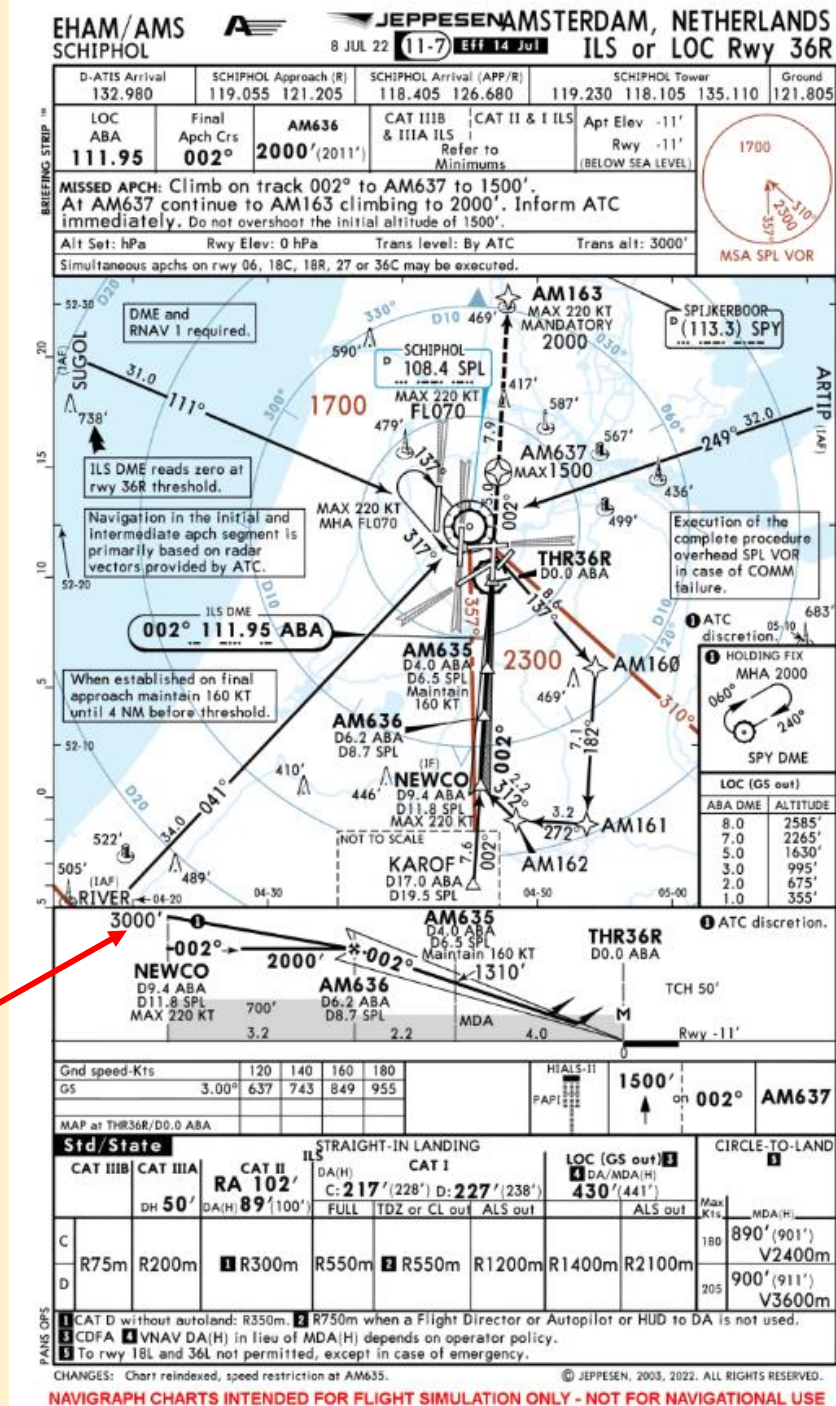
FERDI

Y18

DENUT

DENUT3A

EHAM/36R



Up to Date
Charts

LFPG/09

NURMO5K

NURMO

UN874

VEKIN

UN873

ADUTO

N873

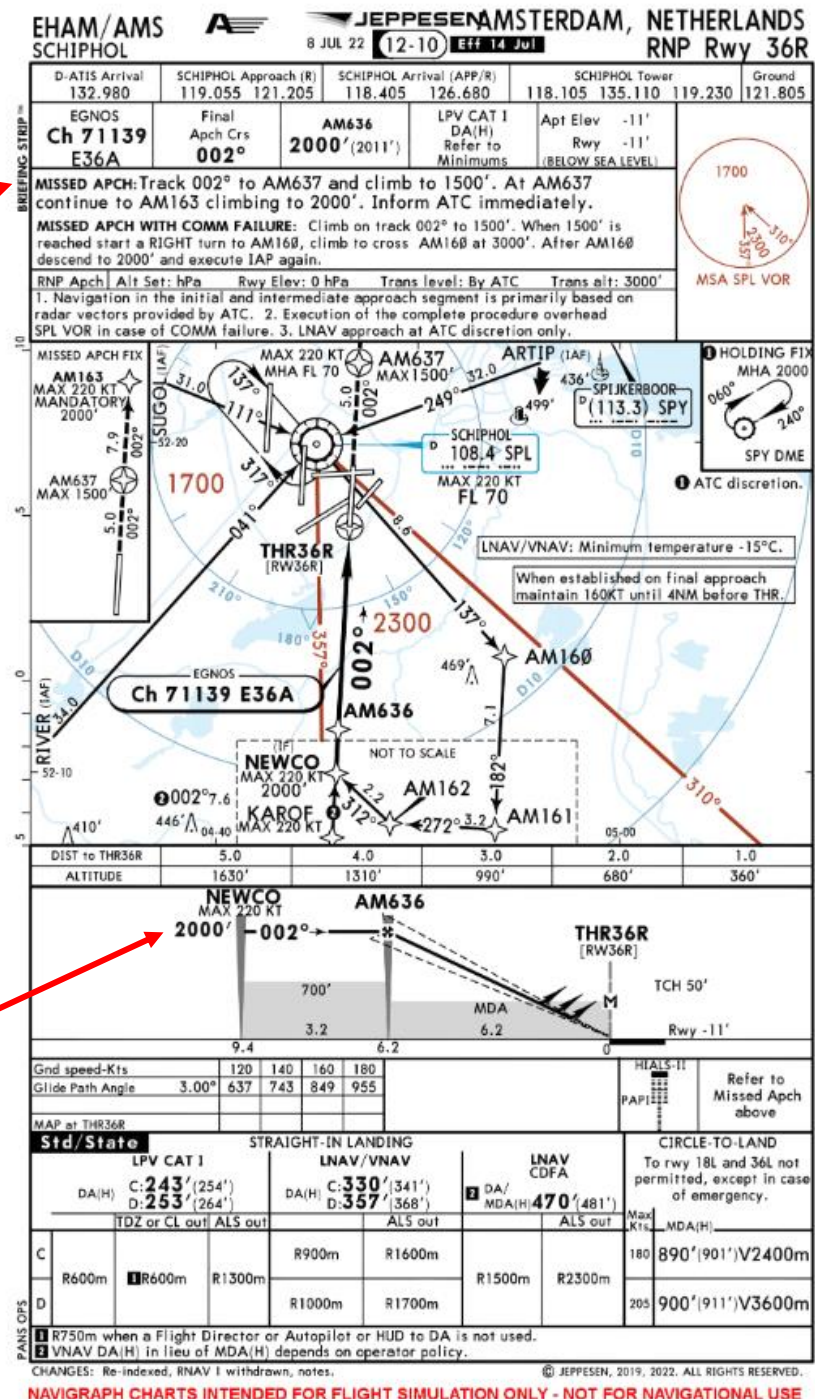
FERDI

Y18

DENUT

DENUT3A

EHAM/36R



Up to Date
Charts

LFPG/09

NURMO5K

NURMO

UN874

VEKIN

UN873

ADUTO

N873

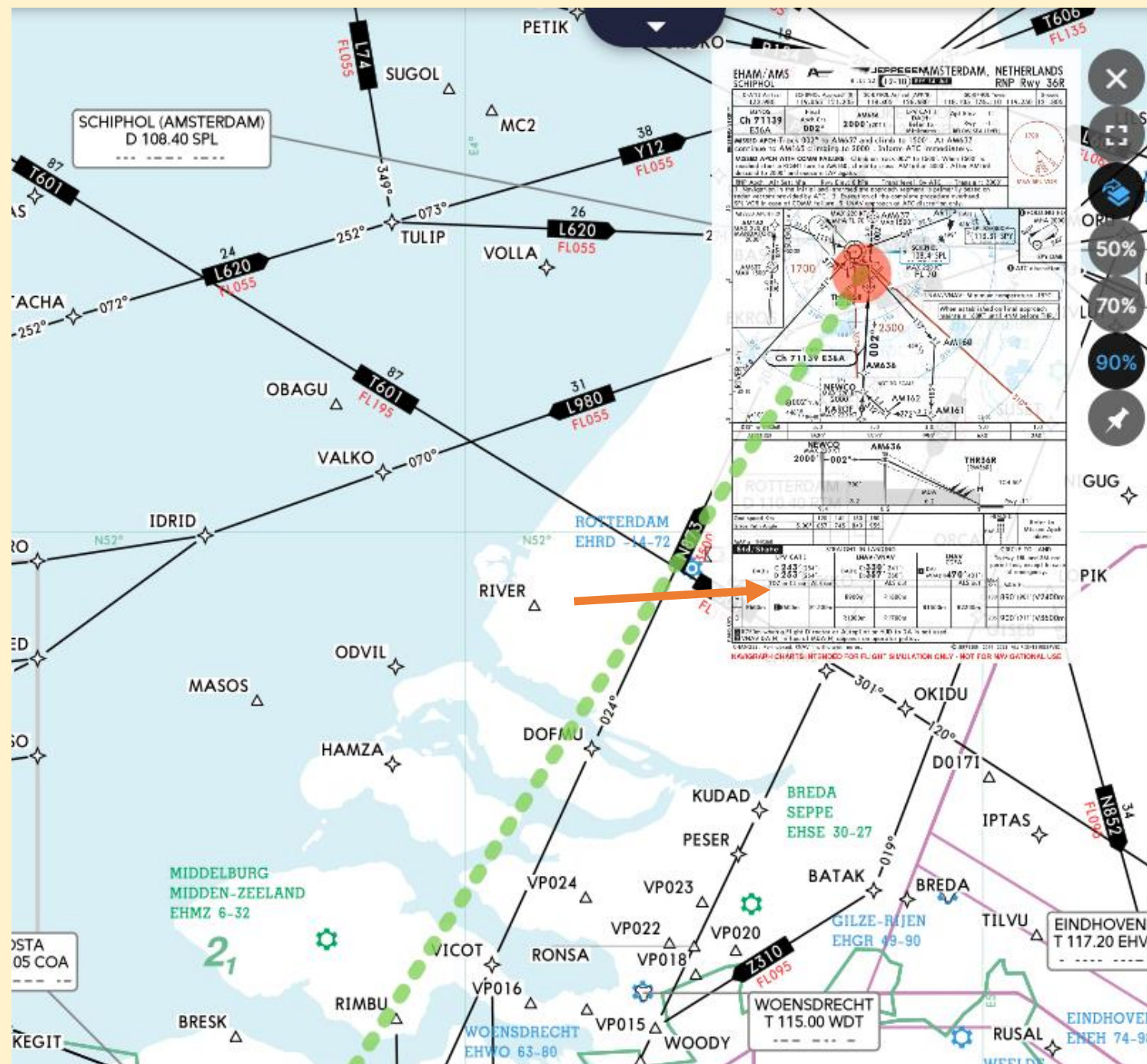
FERDI

Y18

DENUT

DENUT3A

EHAM/36R



EHAM/36R



Up to Date
Charts



PMDG B737 NGX

Corresponding Navigational Databases

The navigational data available via Navdata keeps

- the waypoints and
- the frequencies

in the navigational databases in your flight simulator up to date

So

computations made by your aircraft **Flight Management Computer** displays correspond to the information in the **charts**

Corresponding Navigational Databases

PMDG B737

FMC /CDU

Geladen met
Navigraph
Data Base



A Unified Virtual Airspace for All

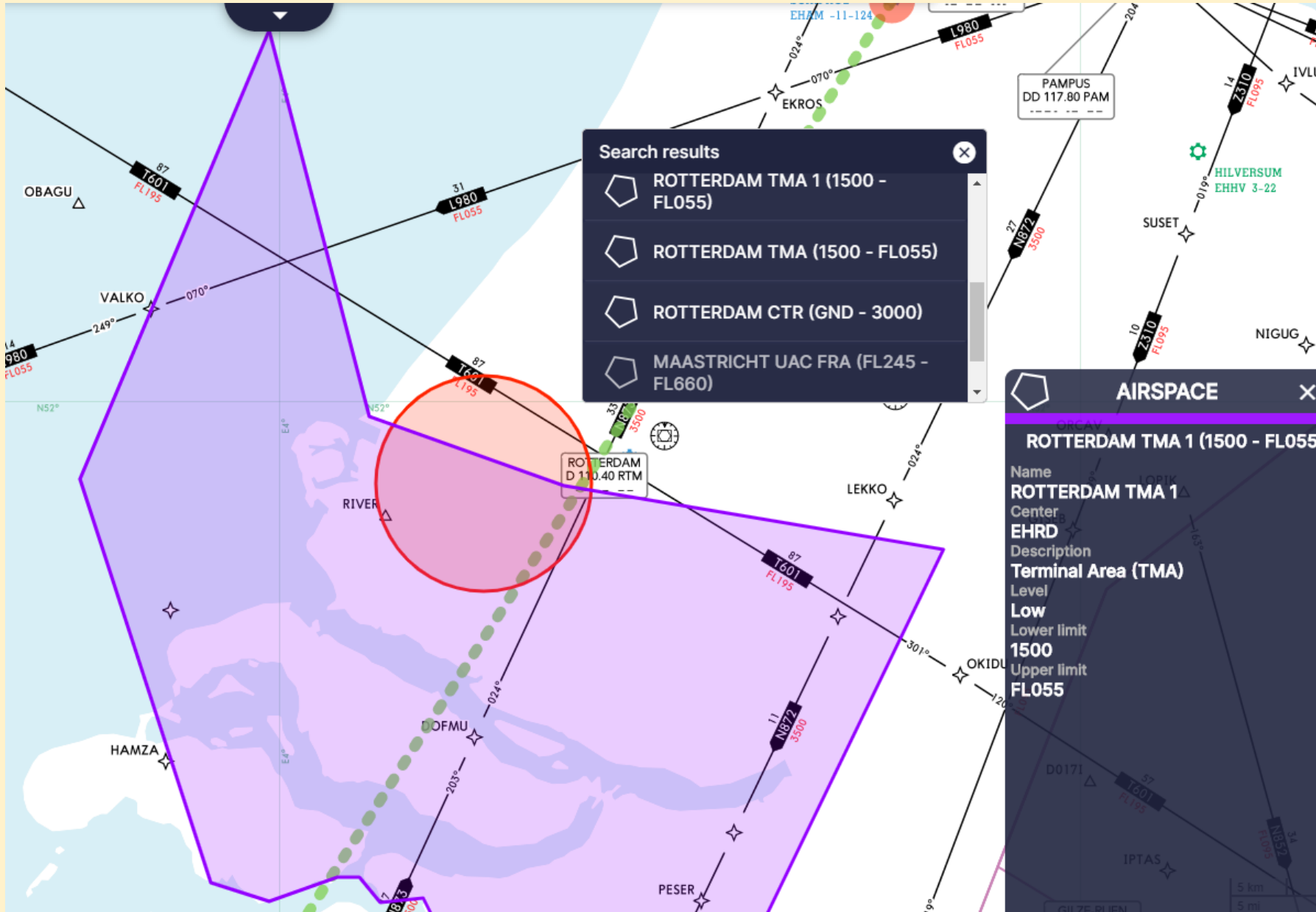
Many third party software developers use Navigraph navigational data.

If you use any Navigraph services,
or fly in a networked mode together with
other pilots and controllers,

you want to use
the most recent navigational data
corresponding to the latest AIRAC cycle

Everything is in synch and everyone share the
same updated virtual airspace.

A Unified Virtual Airspace for All



Explore Airspaces

Use interactive
enroute chart

click any symbol
to find more
information
about

- airports,
- airways,
- airspaces

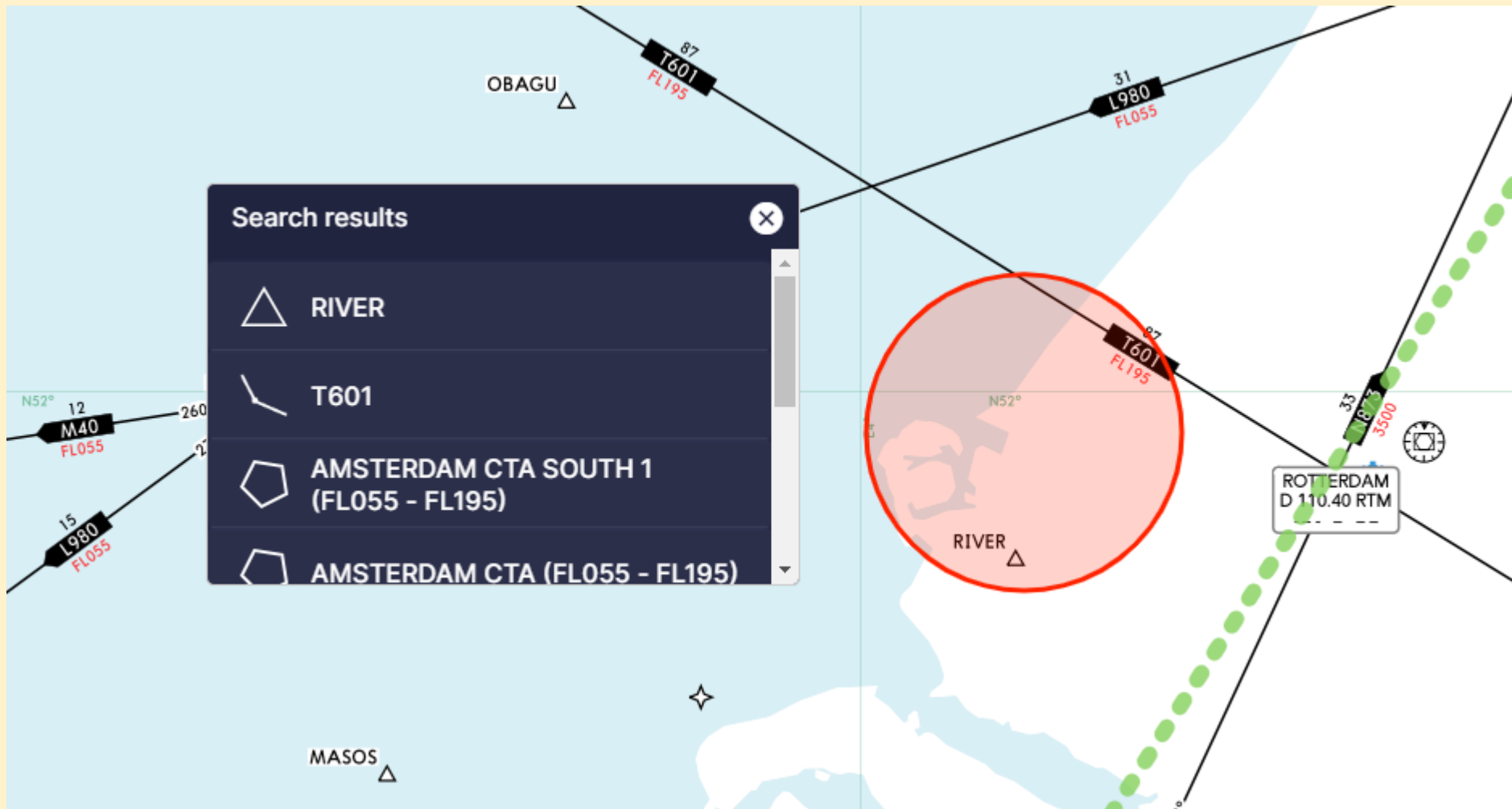
A Unified Virtual Airspace for All

Explore Airspaces

Use interactive
enroute chart


click any symbol
to find more
information
about

- airports,
- airways,
- airspaces



Download recente ARAC met de FMS Data Manager

Navigraph FMS Data Manager



Navigraph

Welcome **hmeertens**. The current AIRAC cycle is **2209**.

Addon List

Addon Mappings

Settings

☒

Update

Backup

Restore

Refresh

Sort

Type to filter by name...

☒

ActiveSky P3D

TOOL

2209 rev 1

Download

Backup

Restore

☒

Carenado (all products)

P34

2209 rev 1

Download

Backup

Restore

☒

Little NavMap

USER

2209 rev 1

Download

Backup

Restore

☒

Little NavMap

TOOL

2209 rev 1

Download

Backup

Restore

☒

PMDG (all products)

P34

2209 rev 1

Download


Backup

Restore

Show access code for ...

Copy

DATA PROVIDED BY JEPPESEN



Drie opties van Fsim vluchten

❑ In je eentje

❑ FSGG VFR met beknopte ATC

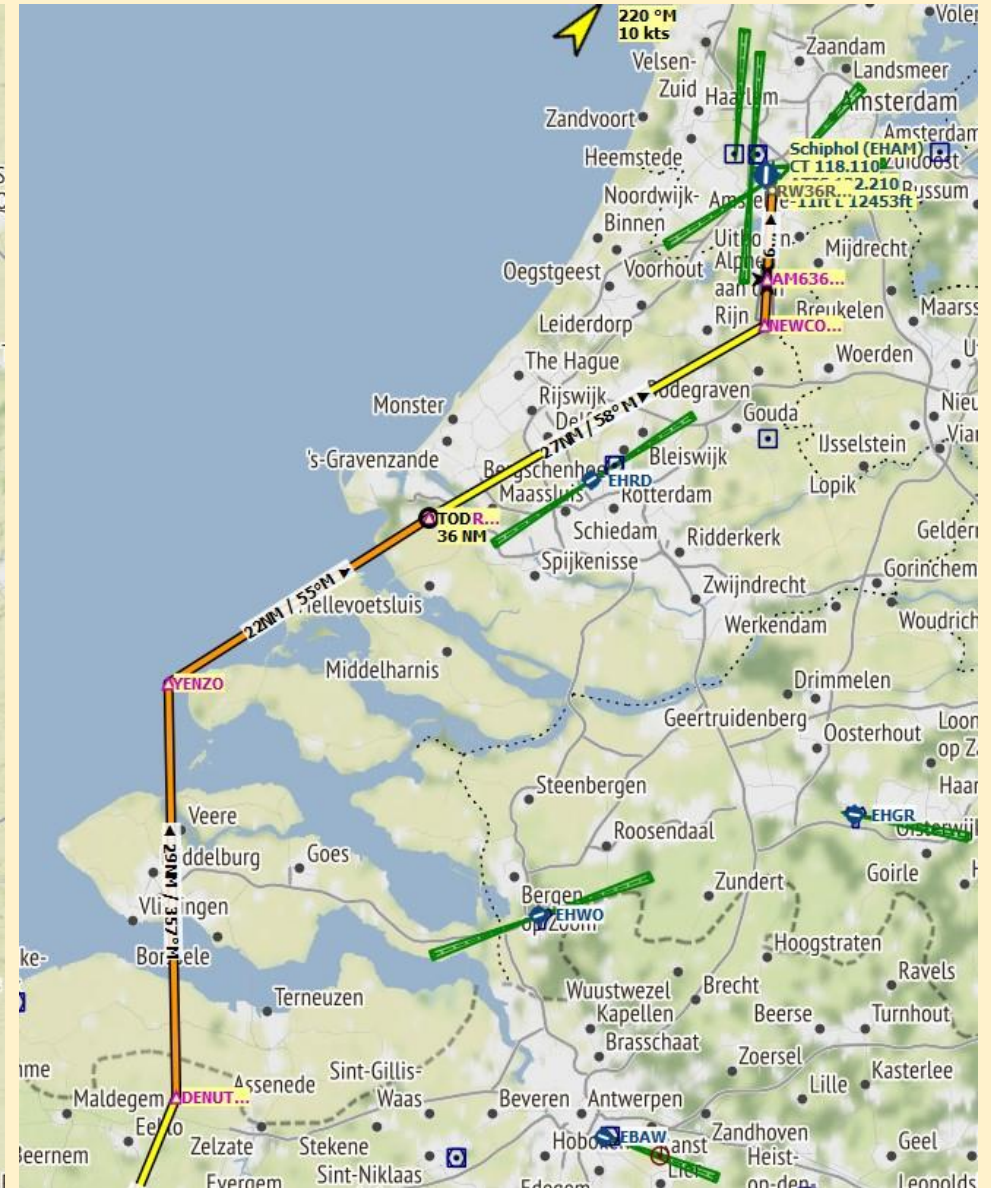
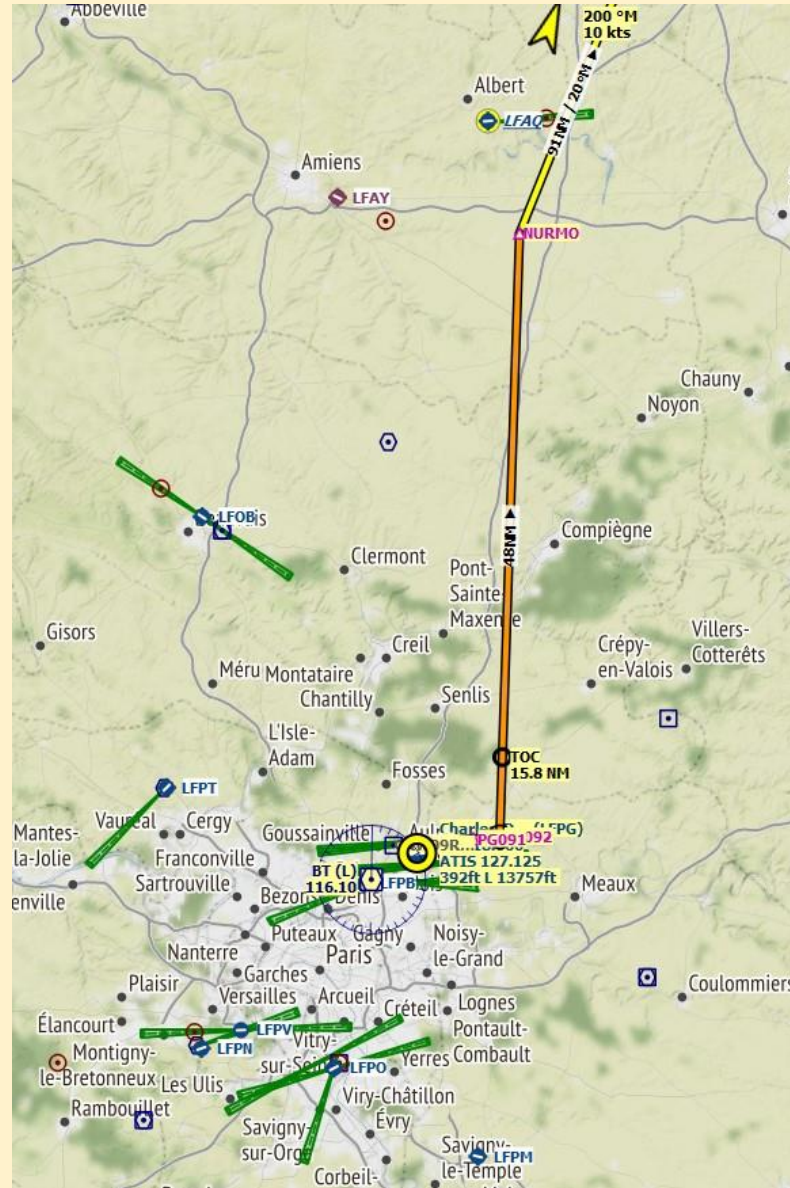
❑ IVAO met uitgebreide ATC

Subscriptions

	Most Popular	
<h2>Navdata</h2> <p>Yearly</p> <p>Access to Navdata for all major addons, charged annually.</p> <h3>EUR 31.34</h3> <p>Price includes VAT</p> <h2>Navdata</h2> <p>Navigraph Navdata Center Navigraph FMS Data Manager</p> <p>Navdata for all major addons Navdata for X-Plane and FS2020 Automatic detection of navdatabases Navdata for SimBrief</p> <p>More features</p>	<h2>Ultimate</h2> <p>Monthly</p> <p>Access to all our products and services with the flexibility of a monthly subscription.</p> <h3>EUR 10.04</h3> <p>Price includes VAT</p> <h2>Navdata</h2> <p>Navigraph Navdata Center Navigraph FMS Data Manager</p> <p>Navdata for all major addons Navdata for X-Plane and FS2020 Automatic detection of navdatabases Navdata for SimBrief</p> <p>More features</p> <h2>Charts</h2> <p>Navigraph Charts software (Win/Mac/iOS/Android/Web)</p> <p>Jeppesen Airport Charts Interactive Enroute Charts Moving Maps Route Calculation Charts API integration with EFB Integration (PMDG and more)</p>	<h2>Ultimate</h2> <p>Yearly</p> <p>Access to all our products and services to a discounted (25%) yearly price.</p> <h3>EUR 90.63</h3> <p>Price includes VAT</p> <h2>Navdata</h2> <p>Navigraph Navdata Center Navigraph FMS Data Manager</p> <p>Navdata for all major addons Navdata for X-Plane and FS2020 Automatic detection of navdatabases Navdata for SimBrief</p> <p>More features</p> <h2>Charts</h2> <p>Navigraph Charts software (Win/Mac/iOS/Android/Web)</p> <p>Jeppesen Airport Charts Interactive Enroute Charts Moving Maps Route Calculation Charts API integration with EFB Integration (PMDG and more)</p>

Corresponding Navigational Databases

Little Nav Map



VFR charts in Navigraph

Is Navigraph still planning to include VFR charts in Navigraph? Marco

Stephen CTO & Co-Founder Mar 2021

- rebuilding our suite of Charts apps from scratch.
- not just adding VFR Charts.
- adding many VFR features including flightplanning, and many new IFR features, and this would not have been feasible in the old apps which were three separate and quite dated codebases.
- rebuilding now around one common code base for all apps, iOS, Android, Web, Desktop (PC/Mac).

In this way Navigraph will be able to deliver features at a much higher rate, but the initial release will take more time due to the complete rewrite of the platform.

Are looking at the Q2 2022 timeframe for a beta release of the new apps.

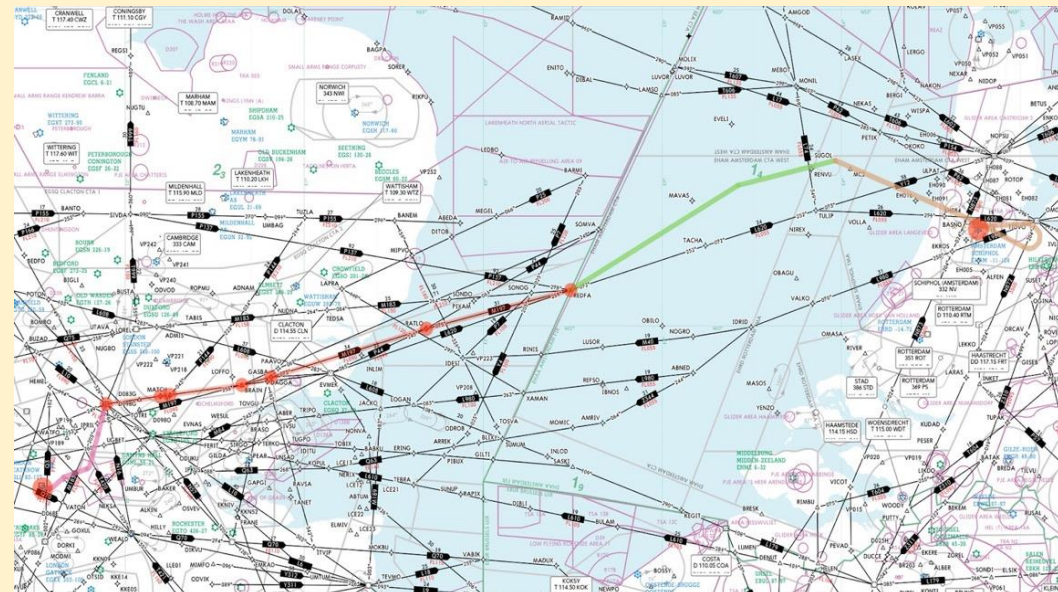
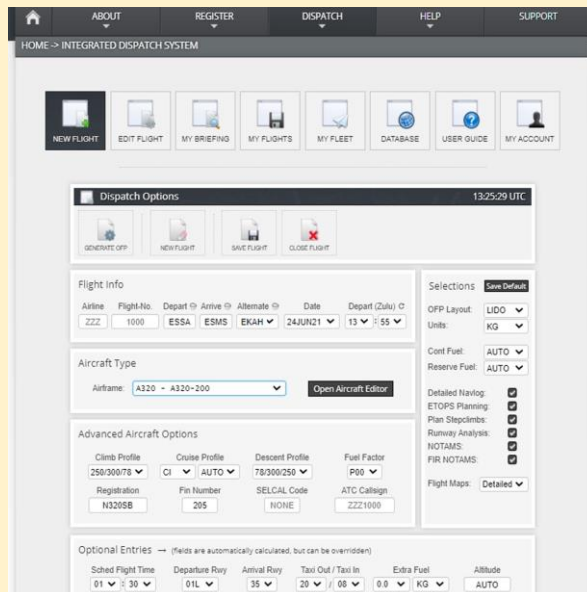
Regards, Stephen

SimBrief

SimBrief.com is a freeware, web-based, flight planning tool that produces accurate briefing packages for flight simulation.

When creating a flight plan using SimBrief, a briefing package similar to those real-world pilots use will be generated.

This will provide you with the essential information required to prepare your flight.



SimBrief



Dispatch Output

13:39:38 UTC



EDIT FLIGHT



NEW FLIGHT



PRINT/VIEW PDF



PREFILE FLIGHT



DOWNLOAD FMS



IFPS VALIDATE



This briefing was generated on: September 19th, 2022 at 13:37 UTC. The total process time was: 4 seconds.

OFP Summary

Airline

NONE

Flight-No.

NONE

Aircraft

B737

Orig.

LFPG

Dest.

EHAM

Altn.

EBBR

Cruise

FL300

Date

19SEP22

Depart

14:05 UTC

Air Time

0:48

Block Fuel

5046 kg

Extra Fuel

0 kg

ZFW

49632 kg

TOW

54451 kg

Routing

NURM5K NURMO UN874 VEKIN UN873 ADUTO N873 FERDI Y18 DENUT DENU3A

DX Remarks

NONE

AIRAC Cycle

2209

OFP Format

LIDO

Units

KGS

Navlog

Yes

ETOPS

Yes

NOTAMs

Airport/FIR

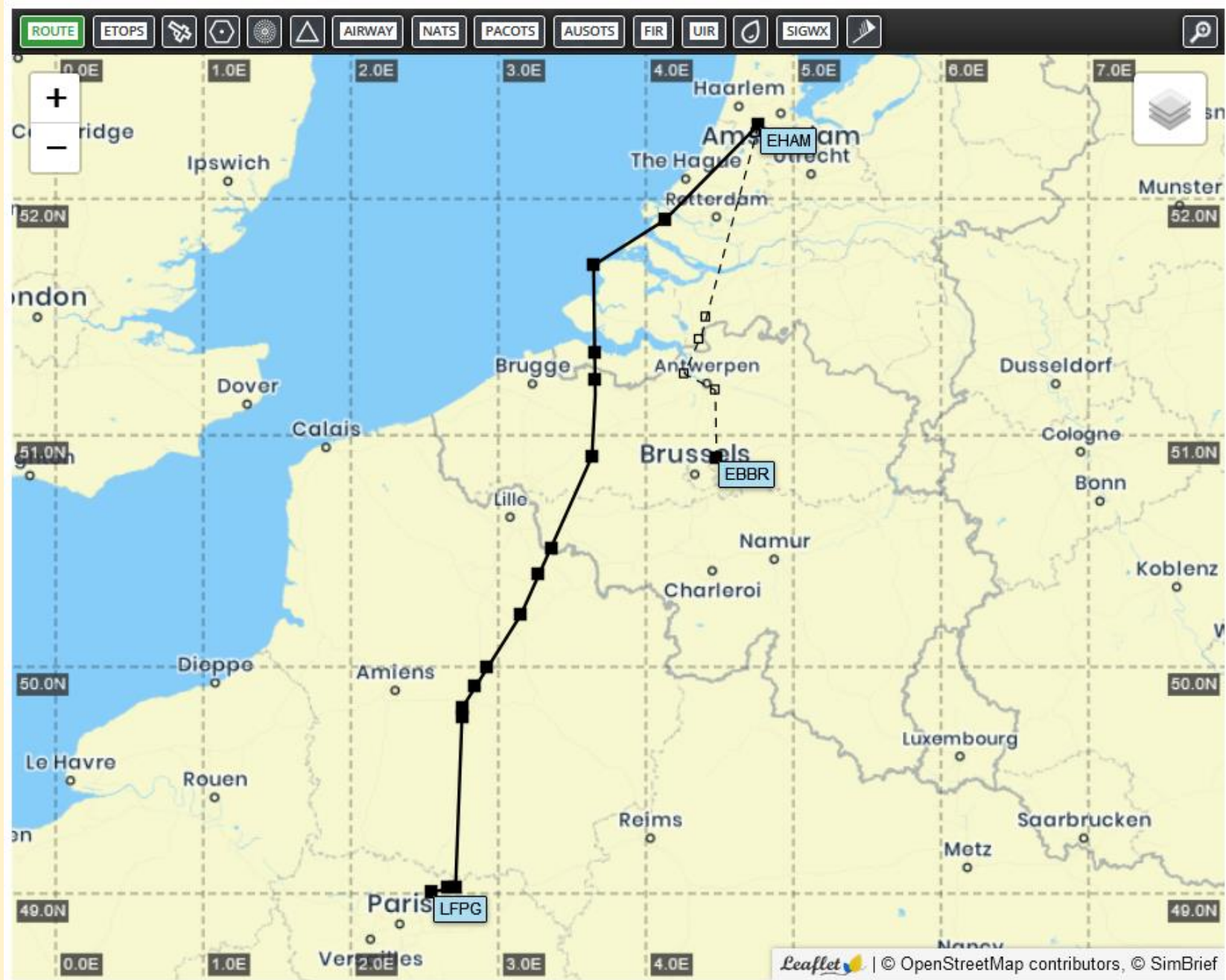
Fuel Factor

P05

AIRAC Cycle: 2209 ✔ Current

simBrief by Navigraph

SimBrief



SimBrief

[OFP]

N714SB 19SEP2022 LFPG-EHAM B737 N714SB RELEASE 1337 19SEP22
OFP 1 CHARLES-DE-GAULLE-SCHIPHOL

WX PROG 1912 1915 1918 OBS 1906 1906 1906

ATC C/S KLM127 LFPG/CDG EHAM/AMS CRZ SYS CI 30
19SEP2022 N714SB 1405/1425 1513/1521 GND DIST 235
B737-700 / CFM56-7B24 STA 1520 AIR DIST 269

CTOT:..... G/C DIST 215

AVG WIND 341/052
MAXIMUM TOW 70080 LAW 58604 ZFW 55202 AVG W/C M042
ESTIMATED TOW 54451 LAW 52379 ZFW 49632 AVG ISA P002

AVG FF KGS/HR 2553

FUEL BIAS P05.0

TKOF ALTN

ALTN EBBR

FL STEPS LFPG/0300/

DISP RMKS NIL

SimBrief

PLANNED FUEL

FUEL	ARPT	FUEL	TIME
TRIP	AMS	2072	0048
CONT 15 MIN		638	0015
ALTN	BRU	1162	0033
FINRES		947	0030
MINIMUM T/OFF FUEL		4819	0207
EXTRA		0	0000
T/OFF FUEL		4819	0207
TAXI	CDG	227	0020
BLOCK FUEL	CDG	5046	
PIC EXTRA		
TOTAL FUEL		
REASON FOR PIC EXTRA		

FMC INFO:
FINRES+ALTN 2109
TRIP+TAXI 2299

NO TANKERING RECOMMENDED (P)

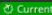
I HEREWITH CONFIRM THAT I HAVE PERFORMED A THOROUGH SELF BRIEFING ABOUT THE DESTINATION AND ALTERNATE AIRPORTS OF THIS FLIGHT INCLUDING THE APPLICABLE INSTRUMENT APPROACH PROCEDURES, AIRPORT FACILITIES, NOTAMS AND ALL OTHER RELEVANT PARTICULAR INFORMATION.

DISPATCHER: RENEE MADDEN

PIC NAME: MEERTENS, HARM

TEL: +1 800 555 0199

PIC SIGNATURE:

AIRAC Cycle: 2209  Current

simBrief by Navigraph 

SimBrief

ALTERNATE ROUTE TO:				FINRES			947
APT	TRK	DST	VIA	FL	WC	TIME	FUEL
-----				-----			
EBBR/25L	187	124	DCT WOODY WOODY7A	160	P029	0033	1162
-----				-----			

MEL/CDL ITEMS DESCRIPTION

ROUTING:

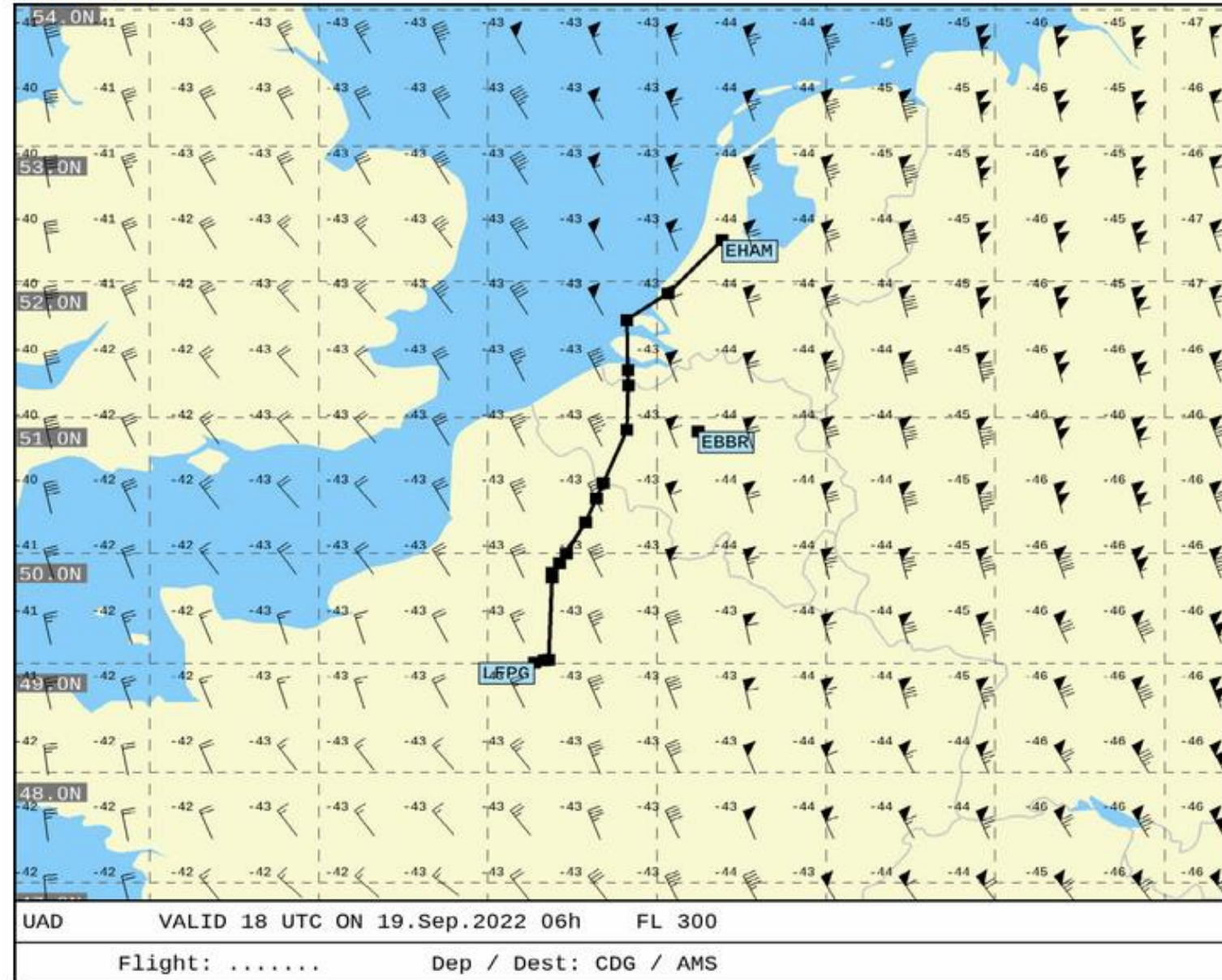
ROUTE ID: DEF RTE
LFPG/09R NURMO5K NURMO UN874 VEKIN UN873 ADUTO N873 FERDI Y18 DENUT
DENUT3A EHAM/36R

DEPARTURE ATC CLEARANCE:

-
-
-

SimBrief

UAD 2 of 3

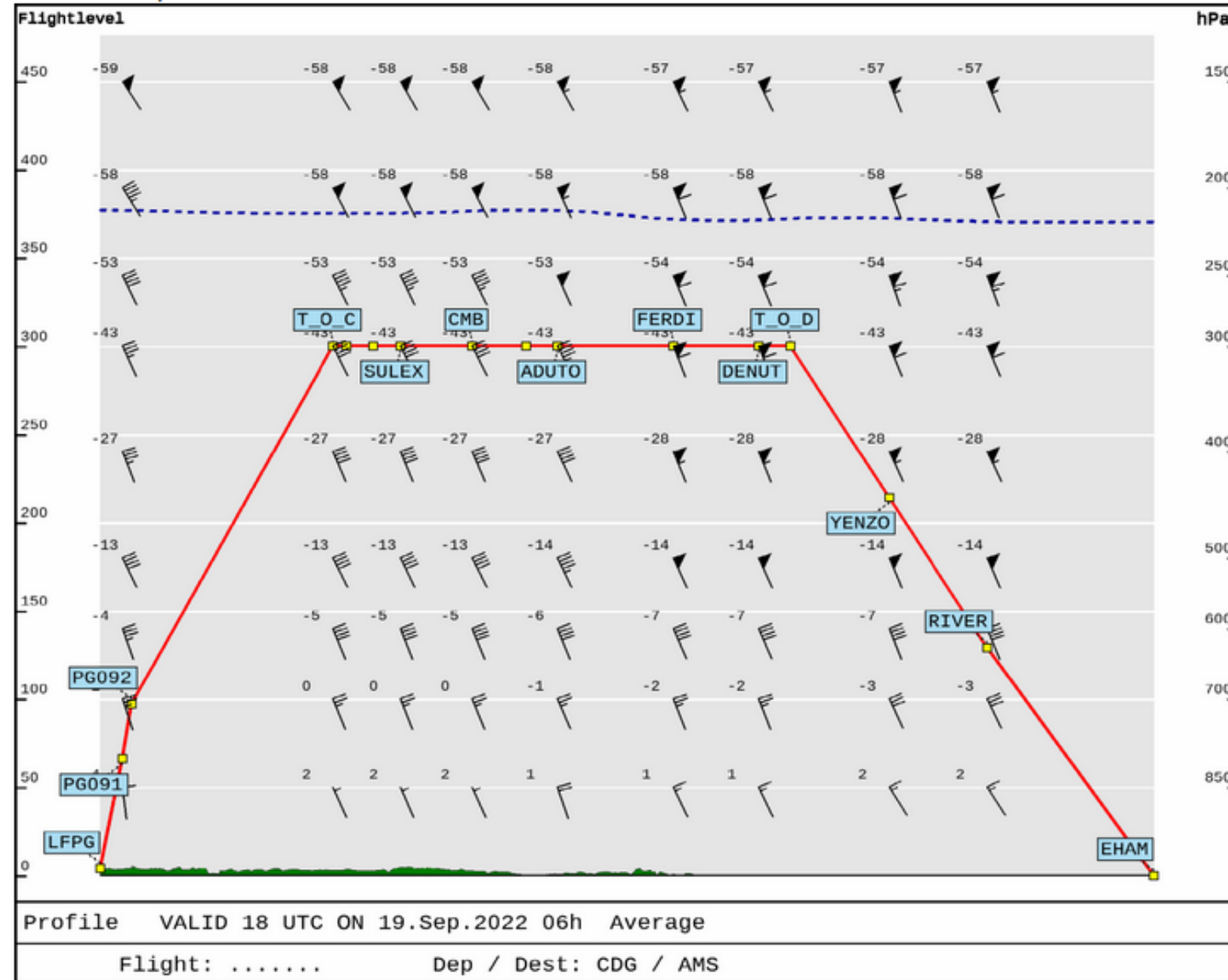


AIRAC Cycle: 2209 Current

simBrief by Navigraph

SimBrief

Vertical profile



AIRAC Cycle: 2209 Current

simBrief by Navigraph