

Airport information:

Country: Netherlands

City: GRONINGEN

Coordinates: N 53° 07.5', E006 35.0

Elevation: 17

Customs: Customs

Fuel: 100LL, Jet A1

RFF: CAT 3. MON-FRI 0530-2200, SAT, SUN 0630-2030. For planned charter TFC CAT 4-7 avb

hours: AD HRS: MON-FRI 0530-2200. SAT, SUN, HOL: 0630-2030

Runways:

Runway 01

Takeoff length: 1500, Landing length: 1500

Runway 05

Takeoff length: 1800, Landing length: 1800

Runway 19

Takeoff length: 1500, Landing length: 1500

Runway 23

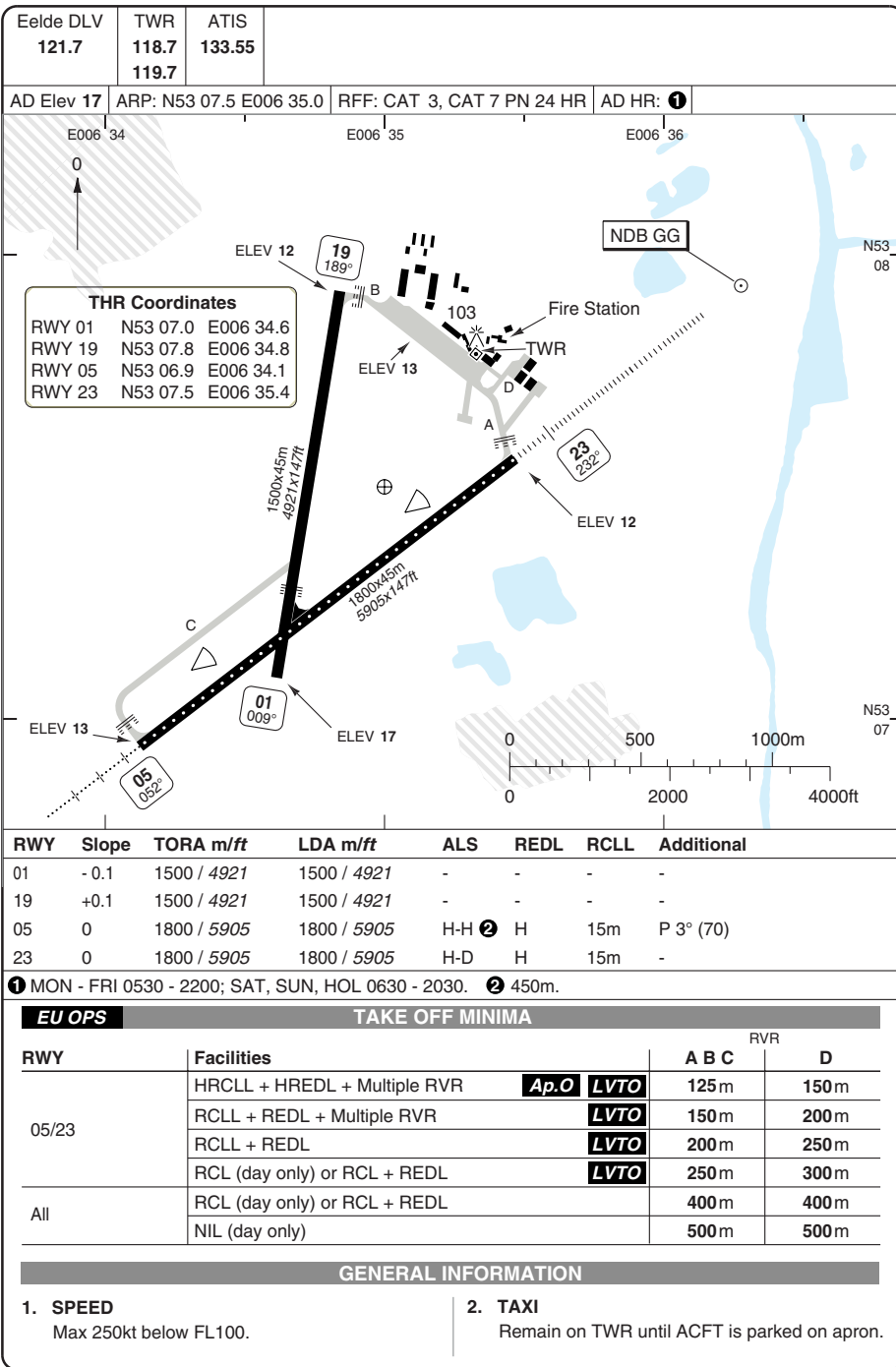
Takeoff length: 1800, Landing length: 1800

WEF 09 FEB 12

10 - 1 11 JAN 12

Netherlands - EHGG / GRQ
Eelde GRONINGEN

10 - 1



Change: THR ELEV, minima

THIS CHART IS A PART OF NAVIGRAPH NDAC AND IS INTENDED FOR FLIGHT SIMULATION USE ONLY

AERODROME**GENERAL**

1. **LOW VISIBILITY**
 - 1.1 The ATC low visibility procedure becomes effective when the lowest RVR of the landing runway in use equals or drops below 1500m and/or the cloud base is equal to or less than 300ft. First, the minimum separation for arriving aircraft and the departure interval will be increased; next, runway use will be restricted.
 - 1.2 Pilots should not request start-up permission unless the RVR values for the take-off runway are above the take-off limits for the flight. Pilots should be informed about the RVR minima that apply to their flight, so that they can readily respond to requests about these minima.
2. **SPEED**
Max 250kt below FL100.
3. **TAXI**
Remain on TWR until aircraft is parked on apron.

DEPARTURE

1. **START UP**
Due to the short flying time to the FIR boundary, pilots of aircraft departing direction Germany/Denmark may request start-up permission before all preparations have been made, indicating the time at which they will be ready to start engines: '...destination...ready to start engines at...'
2. **SID DEVIATIONS**
Instructions containing deviations from the standard instrument departure may be added to the en route or take-off clearance. These instructions may comprise an opposite turn after take-off, maintaining a specified heading or temporary altitude restrictions; they amend the relevant part of the SID only.

Radar Procedures

Eelde APP	TWR	ATIS
120.3	118.7	133.55
119.7	119.7	

SRE RWY 05

FAT 052°	THR Elev 14	AD Elev 17	TL ATC	TA 3000	RTR/MAPt 1.5nm TD 450
MNM ALT 6.6nm TD 2000 , 6nm TD 1800 , 5nm TD 1500 , 4nm TD 1200 , 3nm TD 900 , 2nm TD 600					

ACFT	SRE	Circling a
EU OPS	A	450 (430) 1.5km
	B	520 (500) 1.6km
	C	620 (600) 2.4km
	D	850 (830) 3.6km

Climb on 052° to
2000 . Inform ATC.

COM FAIL:
Climb on 052°. At **2000** turn left
320°. At **3000** PCD to **357 VZ** .
At **VZ** descend to **2000** OUTB
turn, intcp final APCH.

- a** Southeast of AD, unless
otherwise instructed by ATC.

SRE RWY 23

FAT 232°	THR Elev 12	AD Elev 17	TL ATC	TA 3000	RTR/MAPt 1.5nm TD 450
MNM ALT 6.6nm TD 2000 , 6nm TD 1800 , 5nm TD 1500 , 4nm TD 1200 , 3nm TD 900 , 2nm TD 600					

ACFT	SRE	Circling a
EU OPS	A	450 (430) 1.5km
	B	520 (500) 1.6km
	C	620 (600) 2.4km
	D	850 (830) 3.6km

Climb on 232° to
2000 . Inform ATC.

COM FAIL:
Climb on 232°. At **2000** turn right
320°. At **3000** PCD to **330 SO** .
At **SO** descend to **2000** OUTB
turn, intcp final APCH.

- a** Southeast of AD, unless
otherwise instructed by ATC.

SID RWY 05, 23 **RNAV** South Text descriptionEelde **GRONINGEN****SPEED:** MAX 250kt below FL100.**MNM CLIMB GRADIENT:** ACFT unable to perform a climb gradient of
MNM 7% have to inform ATC before DEP.

RWY	SID	Routeing	Altitudes
05	NAPRO 1C	THR05 - EEL - EH516 - EH527 - VEROR - EH521 - EH522 - TENLI - NAPRO.	VEROR At FL70 EH522 MNM FL110
05	RUMER 2C	THR05 - EEL - EH516 - EH527 - VEROR - EH521 - TENLI - EH523 - BASGU - RUMER.	VEROR At FL70
05	SONEB 2C	THR05 - EEL - EH516 - EH527 - VEROR - EH521 - TENLI - SONEB.	VEROR At FL70
05	TEBRO 2C	THR05 - EEL - EH516 - EH527 - VEROR - EH521 - TENLI - TEBRO.	VEROR At FL70
05	TWENTHE 2C	THR05 - EEL - EH539 - EH538 - ELBEK - TWN.	ELBEK At FL50
23	NAPRO 1D	THR23 - EH529 - EH527 - VEROR - EH521 - EH522 - TENLI - NAPRO.	VEROR At FL70 EH522 MNM FL110
23	RUMER 2D	THR23 - EH529 - EH527 - VEROR - EH521 - TENLI - EH523 - BASGU - RUMER.	VEROR At FL70
23	SONEB 2D	THR23 - EH529 - EH527 - VEROR - EH521 - TENLI - SONEB.	VEROR At FL70
23	TEBRO 2D	THR23 - EH529 - EH527 - VEROR - EH521 - TENLI - TEBRO.	VEROR At FL70
23	TWENTHE 2D	THR23 - EH529 - EH538 - ELBEK - TWN.	ELBEK At FL50

30 - 2

TA 3000	AD Elev 17
---------	------------

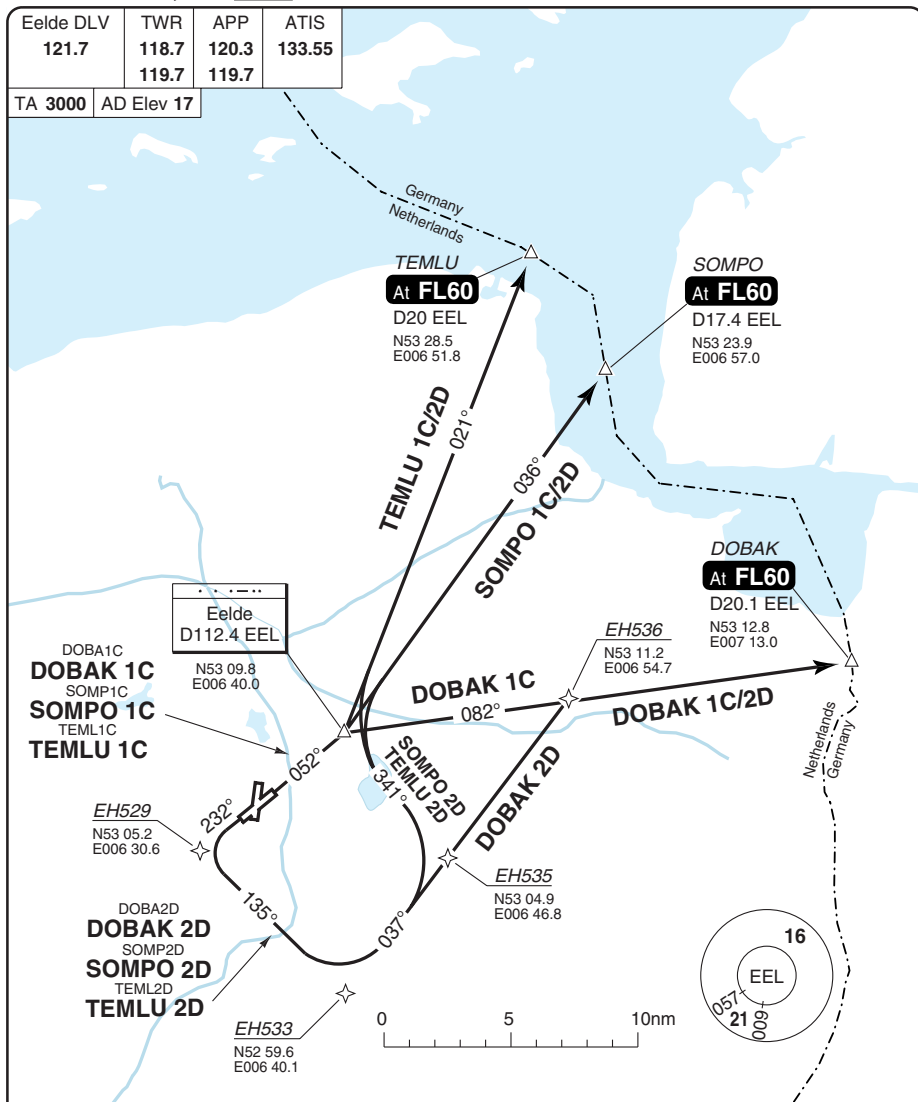


SID RWY 05, 23 **ENAV** West Text description **Eelde GRONINGEN**

SPEED: MAX 250kt below FL100.

MINM CLIMB GRADIENT: ACFT unable to perform a climb gradient of MINM 7% have to inform ATC before DEP.

RWY	SID	Routeing	Altitudes
05	ENKOS 2C	THR05 - EEL - EH516 - EH527 - OSTIR - ENKOS.	OSTIR At FL70
05	NOVEN 1C	THR05 - EEL - EH516 - EH527 - OSTIR - NOVEN - ARTIP.	OSTIR At FL70
05	PAMPUS 2C	THR05 - EEL - EH516 - EH527 - OSTIR - EH528 - PAM.	OSTIR At FL70
05	ROLDU 2C	THR05 - EEL - EH516 - EH527 - OSTIR - ROLDU.	ROLDU At FL50
05	SPIJKER-BOOR 2C	THR05 - EEL - EH516 - EH527 - OSTIR - SPY.	OSTIR At FL70
23	ENKOS 1D	THR23 - EH529 - EH530 - DIVPA - ENKOS.	DIVPA At FL70
23	NOVEN 1D	THR23 - EH529 - EH532 - OSTIR - NOVEN - ARTIP.	OSTIR At FL70
23	PAMPUS 2D	THR23 - EH529 - EH532 - OSTIR - EH528 - PAM.	OSTIR At FL70
23	ROLDU 1D	THR23 - EH529 - EH532 - OSTIR - ROLDU.	ROLDU At FL50
23	SPIJKER-BOOR 1D	THR23 - EH529 - EH530 - DIVPA - SPY.	DIVPA At FL70

SID RWY 05, 23 **RNAV** North, EastEelde **GRONINGEN****SPEED:** MAX 250kt below FL100.**MNM CLIMB GRADIENT:** ACFT unable to perform a climb gradient of MNM 7% have to inform ATC before DEP.

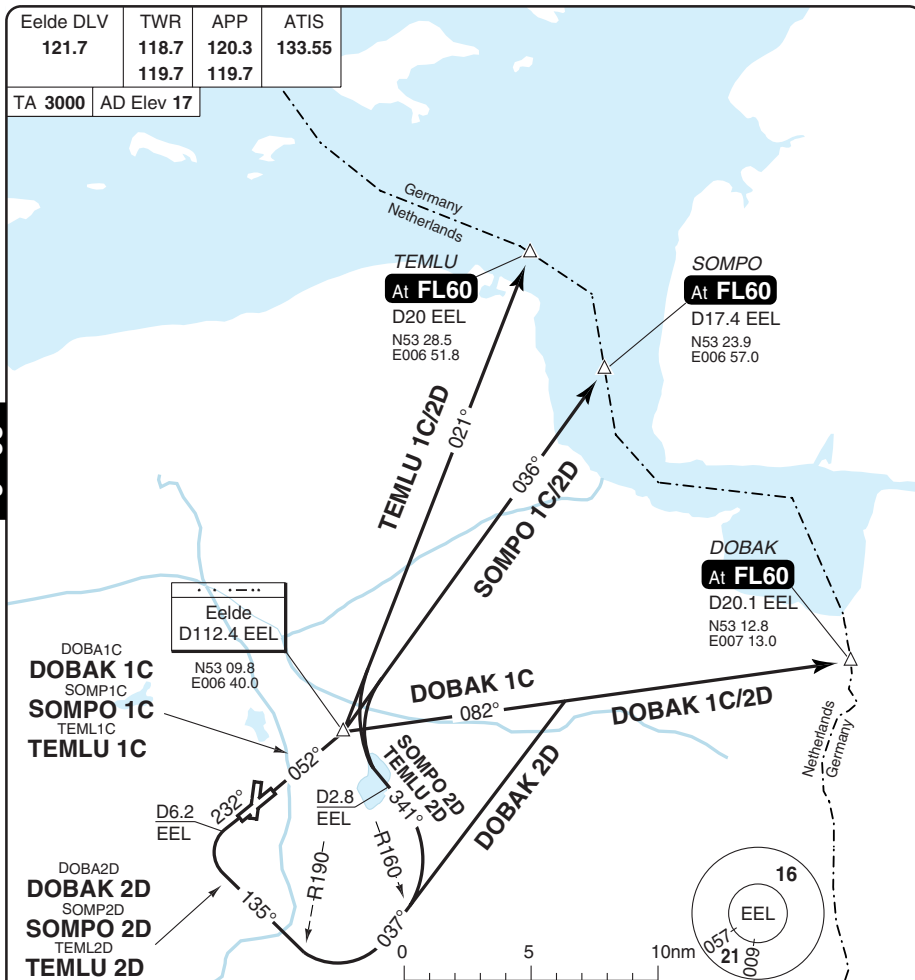
RWY	SID	Routeing	Altitudes
05	DOBAK 1C	THR05 - EEL - DOBAK.	DOBAK At FL60
05	SOMPO 1C	THR05 - EEL - SOMPO.	SOMPO At FL60
05	TEMLU 1C	THR05 - EEL - TEMLU.	TEMLU At FL60
23	DOBAK 2D	THR23 - EH529 - EH533 - EH536 - DOBAK.	DOBAK At FL60
23	SOMPO 2D	THR23 - EH529 - EH533 - EH535 - EEL - SOMPO.	SOMPO At FL60
23	TEMLU 2D	THR23 - EH529 - EH533 - EH535 - EEL - TEMLU.	TEMLU At FL60

Change: New print

THIS CHART IS A PART OF NAVIGRAPH NDAC AND IS INTENDED FOR FLIGHT SIMULATION USE ONLY

SID RWY 05, 23 North, East

Eelde DLV 121.7	TWR 118.7 119.7	APP 120.3 119.7	ATIS 133.55
TA 3000	AD Elev 17		



SPEED: MAX 250kt below FL100.

MNM CLIMB GRADIENT: ACFT unable to perform a climb gradient of MNM 7% have to inform ATC before DEP.

RWY	SID	Routing	Altitudes
05	DOBAK 1C	Climb on 052° - EEL - R082 EEL - DOBAK.	DOBAK At FL60
05	SOMPO 1C	Climb on 052° - EEL - R036 EEL - SOMPO.	SOMPO At FL60
05	TEMLU 1C	Climb on 052° - EEL - R021 EEL - TEMLU.	TEMLU At FL60
23	DOBAK 2D	Climb on 232° - at D6.2 EEL turn left 135° - at R190 EEL turn left 037° - intcp R082 EEL - DOBAK.	DOBAK At FL60
23	SOMPO 2D	Climb on 232° - at D6.2 EEL turn left 135° - at R190 EEL turn left 037° - at R160 EEL turn left - intcp R141 EEL - at D2.8 EEL turn right - intcp R036 EEL - SOMPO.	SOMPO At FL60
23	TEMLU 2D	Climb on 232° - at D6.2 EEL turn left 135° - at R190 EEL - turn left 037° - at R160 EEL turn left intcp R141 EEL - at D2.8 EEL turn right - intcp R021 EEL - TEMLU.	TEMLU At FL60

Change: New print

THIS CHART IS A PART OF NAVIGRAPH NDAC AND IS INTENDED FOR FLIGHT SIMULATION USE ONLY

SID RWY 05, 23 South

Eelde **GRONINGEN**

Eelde DLV	TWR	APP	ATIS
121.7	118.7	120.3	133.55
	119.7	119.7	

TA 3000 AD Elev 17

NAPR1D

NAPRO 1D

RUME2D

RUMER 2D

SONE2D

SONEB 2D

TEBR2D

TEBRO 2D

1 NAPR1C
NAPRO 1C
 RUME2C
RUMER 2C
 SONE2C
SONEB 2C
 TEBR2C
TEBRO 2C
 TWN2C
TWENTHE 2C

VEROR

At FL70

D18.8 EEL

N52 54.1

E006 23.0

D6.2

EEL

D1.5

EEL

Eelde

D112.4 EEL

N53 09.8

E006 40.0

D8

EEL

D7.5

EEL

D502

R172

R179

R207

R213

R213

R213

R213

R213

R213

R213

R213

R213

R213

R213

R213

R213

R213

R213

R213

R213

R213

R213

R213

R213

R213

R213

R213

R213

R213

R213

R213

R213

R213

R213

R213

R213

R213

R213

R213

R213

R213

R213

R213

R213

R213

R213

R213

R213

R213

R213

R213

R213

R213

R213

R213

R213

R213

R213

R213

R213

R213

R213

R213

NAPRO 1C

RUMER 2C

SONEB 2C

TEBRO 2C

ELBEK

At FL50

D13.4 EEL

N52 56.6

E006 43.2

D27.2

EEL

NAPRO 1C/1D

MNM FL110

D49.4 EEL

0 5 10nm

Scale distorted

TENLI

D57.2 EEL

N52 14.8

E006 15.0

Rekken

D116.8 RKN

N52 08.0

E006 45.8

SONEB

D6.6 RKN

N52 01.4

E006 45.9

SONEB

D6.6 RKN

N52 01.4

E006 45.9

SONEB

D6.6 RKN

N52 01.4

E006 45.9

SONEB

D6.6 RKN

N52 01.4

E006 45.9

SONEB

D6.6 RKN

N52 01.4

E006 45.9

SONEB

D6.6 RKN

N52 01.4

E006 45.9

SONEB

D6.6 RKN

N52 01.4

NAPRO

D31.1 RKN

N51 51.4

E006 03.3

TEBRO

D15.8 RKN

N51 53.6

E006 35.3

D108.6

MAS

R356

R356

R356

R356

R356

R356

R356

R356

R356

R356

R356

R356

R356

R356

R356

R356

R356

R356

R356

R356

R356

R356

R356

R356

R356

R356

RUMER

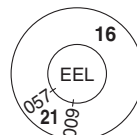
D39.1 MAS

N51 37.2

E005 53.1

Text description

see reverse page, 30 - 8



Twenthe 335.5 TWN

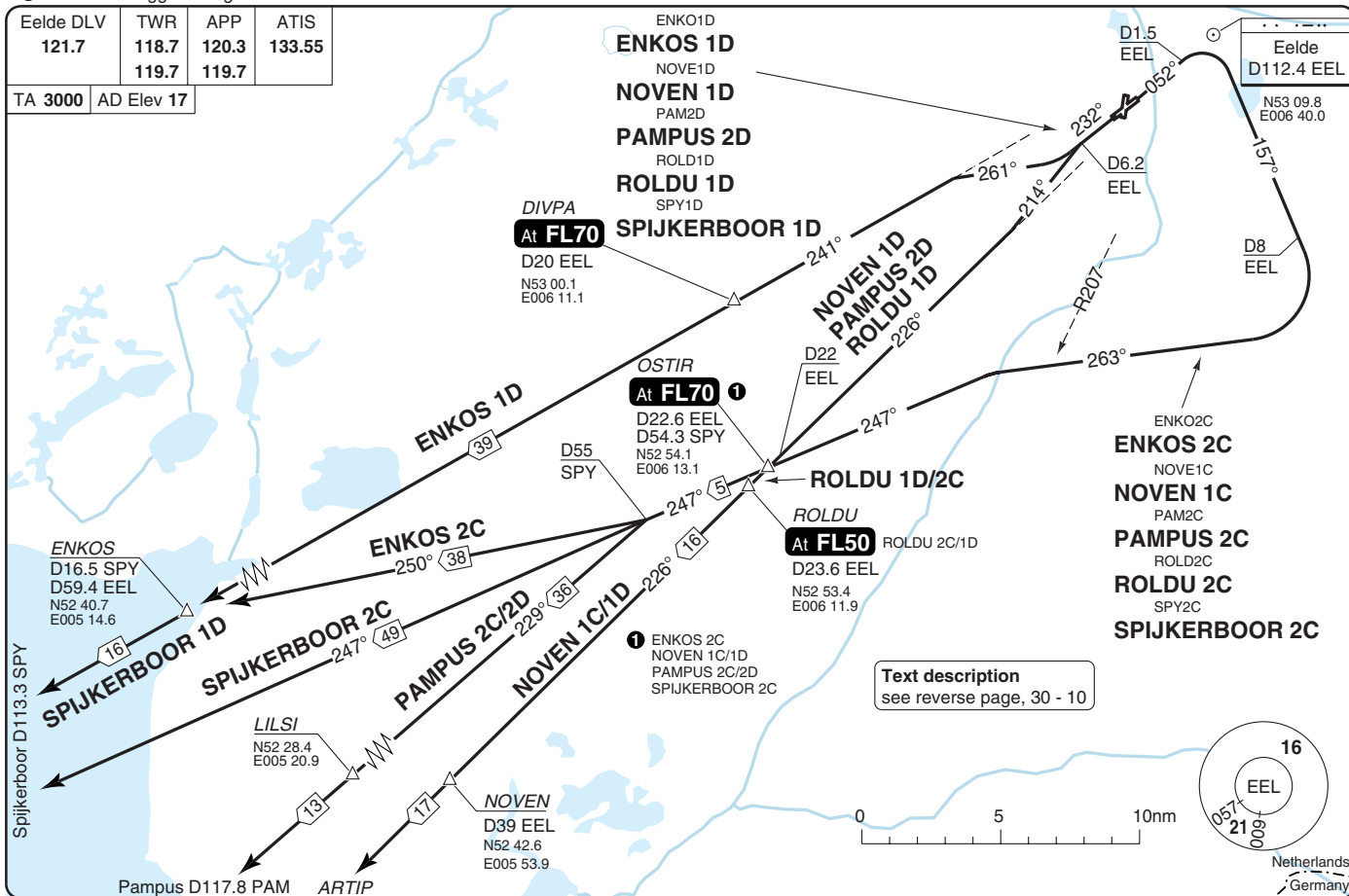
SID RWY 05, 23 South Text description

Eelde **GRONINGEN****SPEED:** MAX 250kt below FL100.**MNM CLIMB GRADIENT:** ACFT unable to perform a climb gradient of
MNM 7% have to inform ATC before DEP.

RWY	SID	Routeing	Altitudes
05	NAPRO 1C	Climb on 052° - at D1.5 EEL turn right - intcp R157 EEL - D8 EEL turn right 263° - at R207 EEL turn left - intcp R213 EEL - at D27.2 EEL turn left 181° - at TENLI turn right 197° - NAPRO.	VEROR At FL70 D49.4 EEL MNM FL110
05	RUMER 2C	Climb on 052° - at D1.5 EEL turn right - intcp R157 EEL - D8 EEL turn right 263° - at R207 EEL turn left - intcp R213 EEL - at D27.2 EEL turn left 181° - TENLI - intcp R249 RKN - intcp R356 MAS - RUMER.	VEROR At FL70
05	SONEB 2C	Climb on 052° - at D1.5 EEL turn right - intcp R157 EEL - D8 EEL turn right 263° - at R207 EEL turn left - intcp R213 EEL - at D27.2 EEL turn left 181° - at TENLI turn left 125° - SONEB.	VEROR At FL70
05	TEBRO 2C	Climb on 052° - at D1.5 EEL turn right - intcp R157 EEL - D8 EEL turn right 263° - at R207 EEL turn left - intcp R213 EEL - at D27.2 EEL turn left 181° - at TENLI turn left 149° - TEBRO.	VEROR At FL70
05	TWENTHE 2C	Climb on 052° - at D1.5 EEL turn right - intcp R157 EEL - D7.5 EEL turn right 205° - intcp R172 EEL - TWN.	ELBEK At FL50
23	NAPRO 1D	Climb on 232° - at D6.2 EEL turn left 197° - intcp R213 EEL - at D27.2 EEL turn left 181° - at TENLI turn right 197° - NAPRO.	VEROR At FL70 D49.4 EEL MNM FL110
23	RUMER 2D	Climb on 232° - at D6.2 EEL turn left 197° - intcp R213 EEL - at D27.2 EEL turn left 181° - TENLI - intcp R249 RKN - intcp R356 MAS - RUMER.	VEROR At FL70
23	SONEB 2D	Climb on 232° - at D6.2 EEL turn left 197° - intcp R213 EEL - at D27.2 EEL turn left 181° - at TENLI turn left 125° - SONEB.	VEROR At FL70
23	TEBRO 2D	Climb on 232° - at D6.2 EEL turn left 197° - intcp R213 EEL - at D27.2 EEL turn left 181° - at TENLI turn left 149° - TEBRO.	VEROR At FL70
23	TWENTHE 2D	Climb on 232° - at D6.2 EEL turn left 135° - at R179 EEL turn right - intcp R172 EEL - TWN.	ELBEK At FL50

Eelde DLV	TWR	APP	ATIS
121.7	118.7	120.3	133.55
	119.7	119.7	

TA 3000 AD Elev 17



SID RWY 05, 23 West

30 - 9 | 11 JAN 12

Netherlands - EHGG / GRO
Eelde GRONINGEN

SID RWY 05, 23 West Text description

Eelde GRONINGEN

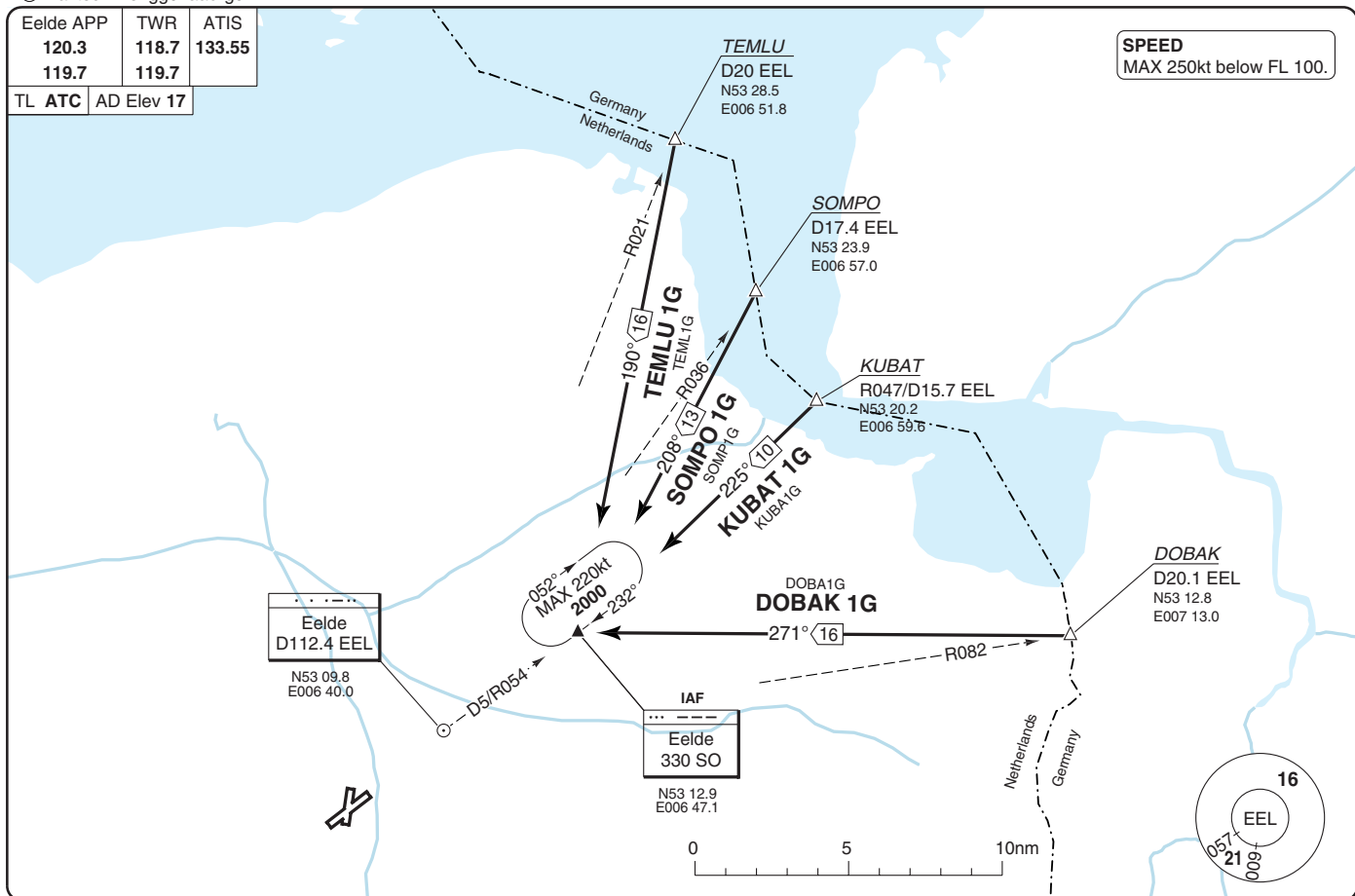
SPEED: MAX 250kt below FL100.

MINM CLIMB GRADIENT: ACFT unable to perform a climb gradient of MINM 7% have to inform ATC before DEP.

RWY	SID	Routing	Altitudes
05	ENKOS 2C	Climb on 052° - at D1.5 EEL turn right - intcp R157 EEL - D8 EEL turn right 263° - at R207 EEL turn left - intcp R067 SPY - at D55 SPY turn right 250° - ENKOS.	OSTIR At FL70
05	NOVEN 1C	Climb on 052° - at D1.5 EEL turn right - intcp R157 EEL - D8 EEL turn right 263° - at R207 EEL turn left - intcp R067 SPY - intcp R226 EEL - NOVEN - ARTIP.	OSTIR At FL70
05	PAMPUS 2C	Climb on 052° - at D1.5 EEL turn right - intcp R157 EEL - D8 EEL turn right 263° - at R207 EEL turn left - intcp R067 SPY - intcp R049 PAM - PAM.	OSTIR At FL70
05	ROLDU 2C	Climb on 052° - at D1.5 EEL turn right - intcp R157 EEL - D8 EEL turn right 263° - at R207 EEL turn left - intcp R067 SPY - intcp R226 EEL - ROLDU.	ROLDU At FL50
05	SPIJKER-BOOR 2C	Climb on 052° - at D1.5 EEL turn right - intcp R157 EEL - D8 EEL turn right 263° - at R207 EEL turn left - intcp R067 SPY - SPY.	OSTIR At FL70
23	ENKOS 1D	Climb on 232° - at D6.2 EEL turn right 261° - intcp R241 EEL - ENKOS.	DIVPA At FL70
23	NOVEN 1D	Climb on 232° - at D6.2 EEL turn left 214° - intcp R226 EEL - NOVEN - ARTIP.	OSTIR At FL70
23	PAMPUS 2D	Climb on 232° - at D6.2 EEL turn left 214° - intcp R226 EEL - at D22 EEL turn right 247° - intcp R049 PAM - PAM.	OSTIR At FL70
23	ROLDU 1D	Climb on 232° - at D6.2 EEL turn left 214° - intcp R226 EEL - ROLDU.	ROLDU At FL50
23	SPIJKER-BOOR 1D	Climb on 232° - at D6.2 EEL turn right 261° - intcp R241 EEL - SPY.	DIVPA At FL70

Eelde APP	TWR	ATIS
120.3	118.7	133.55
119.7	119.7	
TL ATC	AD Elev 17	

SPEED
MAX 250kt below FL 100.



STAR from North, East

40 - 1 11 JAN 12

Netherlands - EHGG / GRO
Eelde **GRONINGEN**

40 - 1

WEF 09 FEB 12

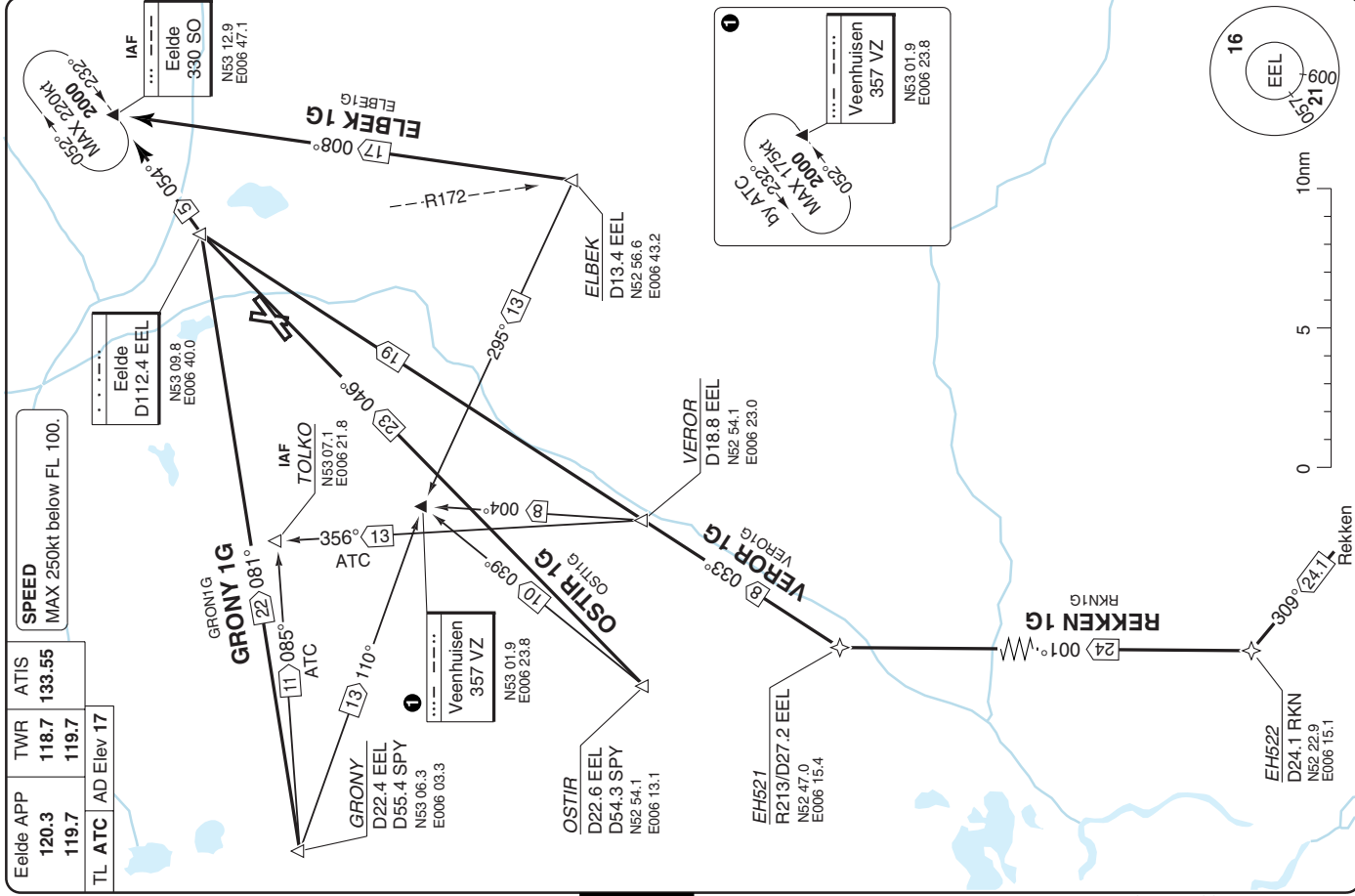
40 - 2 11 JAN 12

Netherlands - EHGG / GRQ
Eelde GRONINGEN

STAR from South, West

Eelde APP	TWR	ATIS	SPEED
120.3	118.7	133.55	MAX 250k1 below FL 100.
119.7	119.7		

TL ATC	AD Elev
17	17



40 - 2

© Navtech - ehgg02aarg0

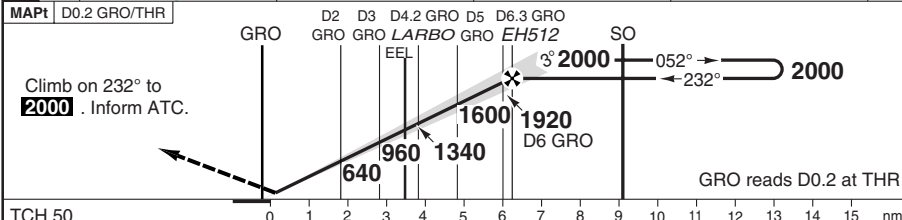
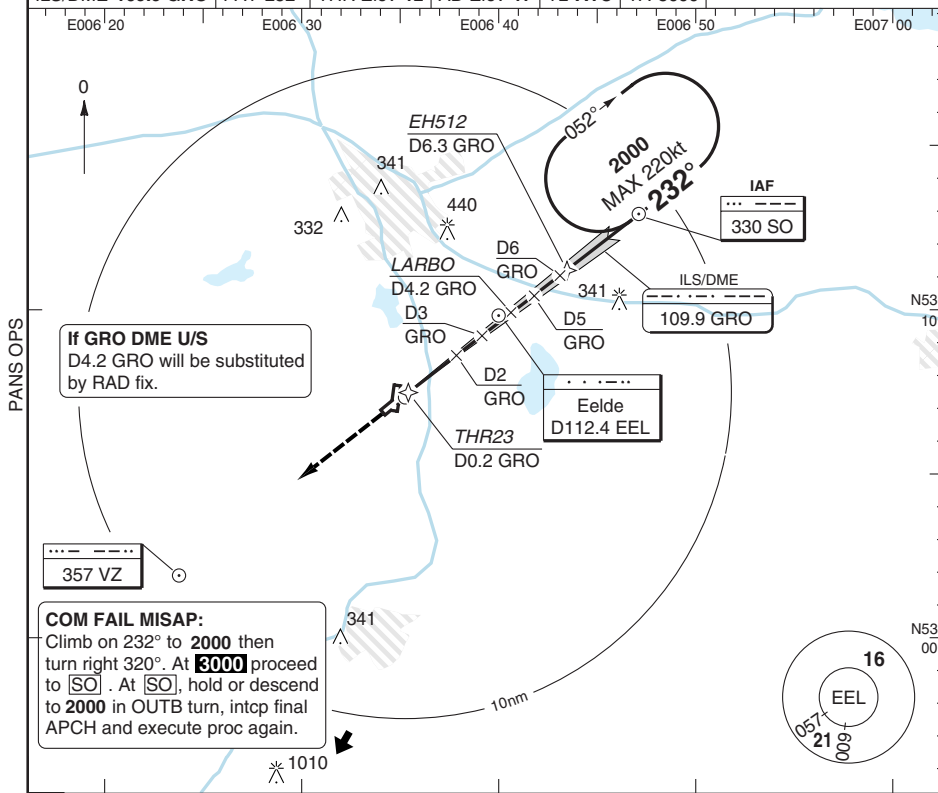
Change: TOLKO arrival route

THIS CHART IS A PART OF NAVIGRAPH NDAC AND IS INTENDED FOR FLIGHT SIMULATION USE ONLY


ILS RWY 23

Eelde APP	TWR	ATIS
120.3	118.7	133.55
119.7	119.7	


ILS/DME 109.9 GRO	FAT 232°	THR Elev 12	AD Elev 17	TL ATC	TA 3000
---------------------------------	-----------------	--------------------	-------------------	---------------	----------------



TCH 50

ACFT	ILS	LOC+DME		Circling 		
EU OPS	A	220 (200) 550m	430 (420) 1200m	450 (430) 1.5km		
	B			520 (500) 1.6km		
	C			620 (600) 2.4km		
	D			850 (830) 3.6km		
GS		80	100	120	140	160
ROD 3.0°		430	530	640	750	850
FAF-MAPt		4:34	3:40	3:03	2:37	2:17

a Southeast of AD, unless otherwise instructed by ATC.

DME GRO	3.0° ALT	LDA 1800x45 5905x147ft
6.2	2000	
5	1610	
4	1290	
3	970	
2	650	
1.4	430	

FALS

Change: New print.

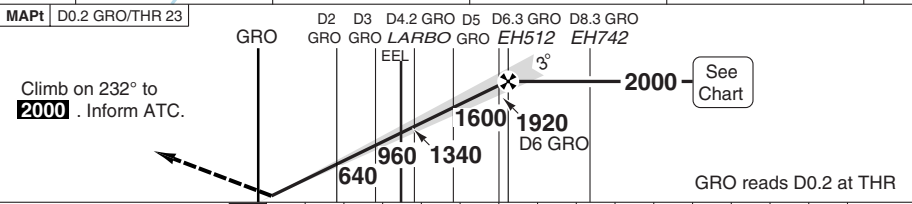
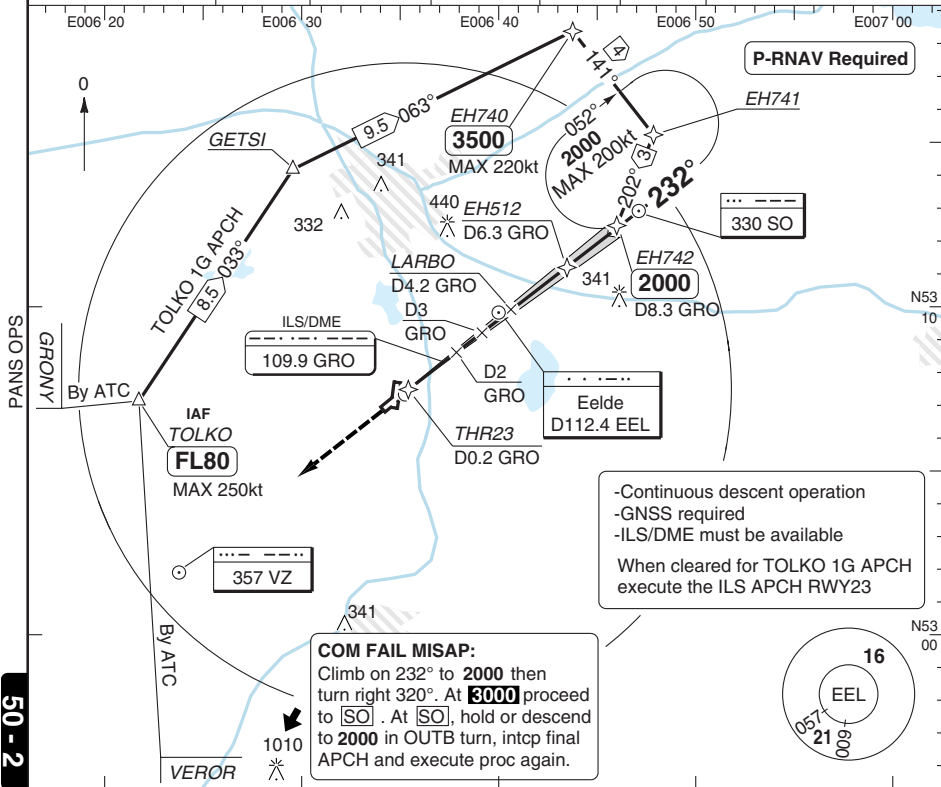
THIS CHART IS A PART OF NAVIGRAPH NDAC AND IS INTENDED FOR FLIGHT SIMULATION USE ONLY


ILS RWY 23 RNAV TOLKO 1G APCH

Eelde GRONINGEN

Eelde APP	TWR	ATIS
120.3	118.7	133.55
119.7	119.7	

ILS/DME 109.9 GRO	FAT 232°	THR Elev 12	AD Elev 17	TL ATC	TA 3000
--------------------------	-----------------	--------------------	-------------------	---------------	----------------



TCH 50			0123456789101112131415nm																		
ACFT		ILS		Circling a		a Southeast of AD, unless otherwise instructed by ATC.										DME GRO		3.0° ALT		LDA 1800x45 5905x147ft	
EU OPS	A	220 (200) 550m		450 (430) 1.5km												6.2		2000			
	B			520 (500) 1.6km												5		1610			
	C			620 (600) 2.4km												4		1290			
	D			850 (830) 3.6km												3		970			
																2		650			
																1.4		430			
GS		80	100	120	140	160															FALS
ROD 3.0°		430	530	640	750	850															

Change: New chart

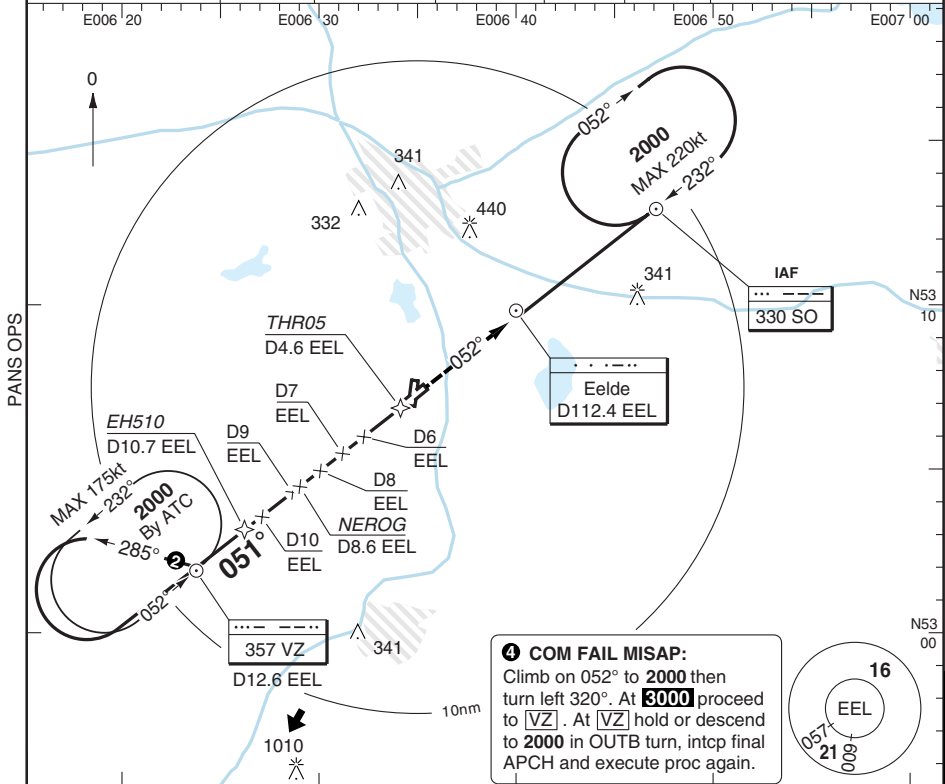
THIS CHART IS A PART OF NAVIGRAPH NDAC AND IS INTENDED FOR FLIGHT SIMULATION USE ONLY

VOR_{RWY} 05

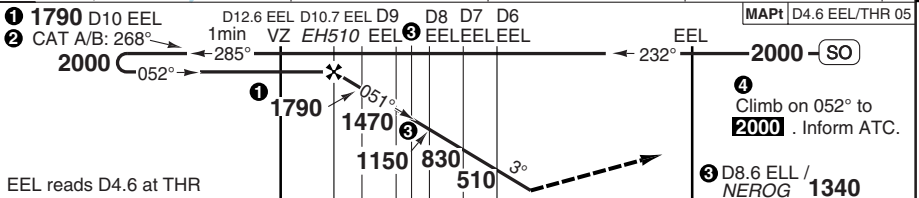
Eelde GRONINGEN

Eelde APP	TWR	ATIS
120.3	118.7	133.55
119.7	119.7	

VOR/DME 112.4 EEL	FAT 051°	THR Elev 14	AD Elev 17	TL ATC	TA 3000
-------------------	----------	-------------	------------	--------	---------



50 - 3



ACFT	VOR+DME	Circling a
EU OPS	440 (420) 1500m	450 (430) 1.5km
		520 (500) 1.6km
		620 (600) 2.4km
		850 (830) 3.6km

GS	80	100	120	140	160
ROD 3.0°	430	530	640	750	850
FAF-MAPt	4:34	3:40	3:03	2:37	2:17

DME EEL	3.0° ALT
10.7	2000
10	1790
9	1470
8	1160
7	840
6	520
5.8	430

LDA 1800x45
5905x147ft
P 3° (70)

IALS

Change: renumbered

THIS CHART IS A PART OF NAVIGRAPH NDAC AND IS INTENDED FOR FLIGHT SIMULATION USE ONLY

WEF 09 FEB 12

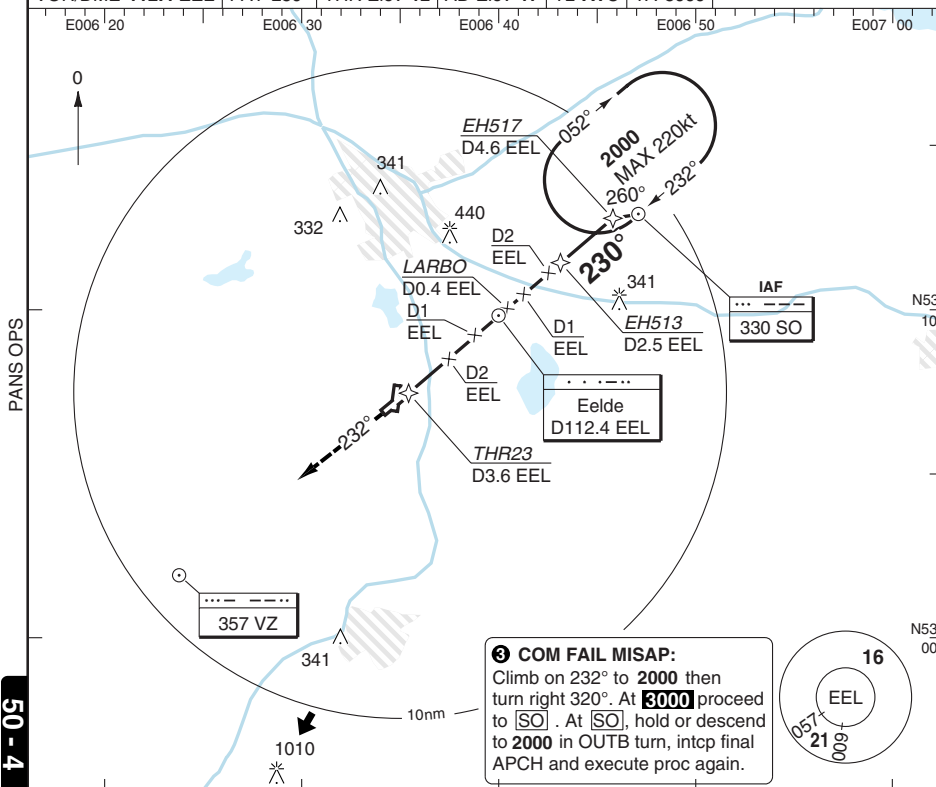
50 - 4 | 11 JAN 12

Netherlands - EHGG / GRQ
Eelde **GRONINGEN**

VOR RWY 23

Eelde APP	TWR	ATIS
120.3	118.7	133.55
119.7	119.7	

VOR/DME	112.4 EEL	FAT	230°	THR Elev	12	AD Elev	17	TL ATC	TA	3000
---------	-----------	-----	------	----------	----	---------	----	--------	----	------



WEF 09 FEB 12

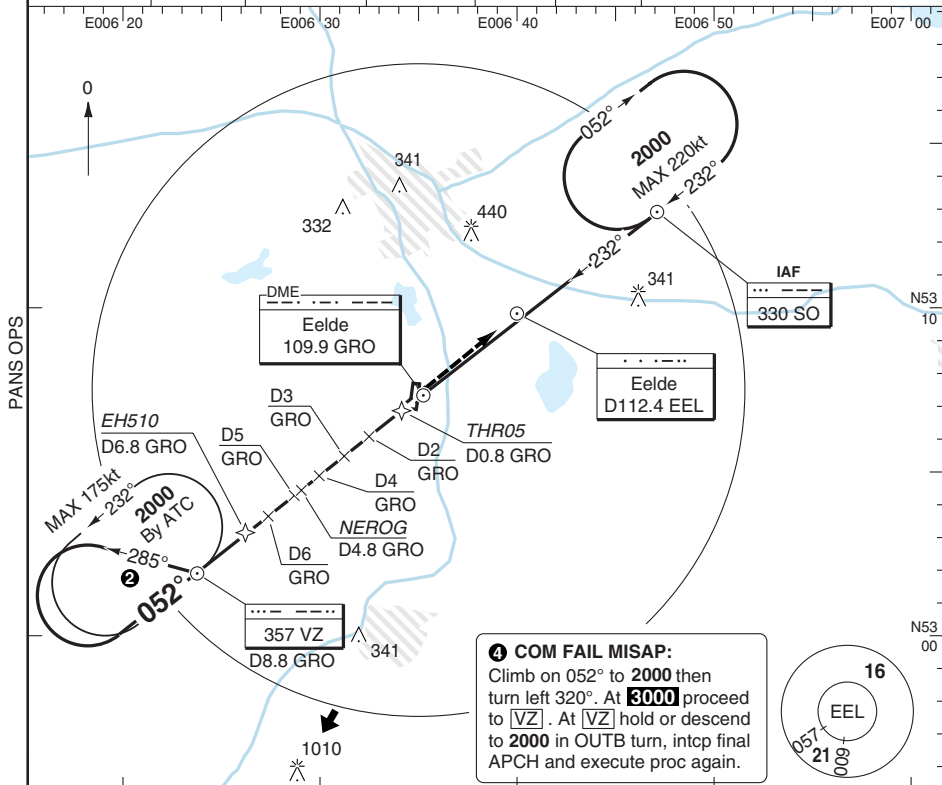
50 - 5 | 11 JAN 12

Netherlands - EHGG / GRQ
Eelde GRONINGEN

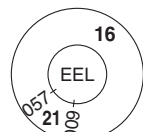
NDB RWY 05

Eelde APP	TWR	ATIS
120.3	118.7	133.55
119.7	119.7	

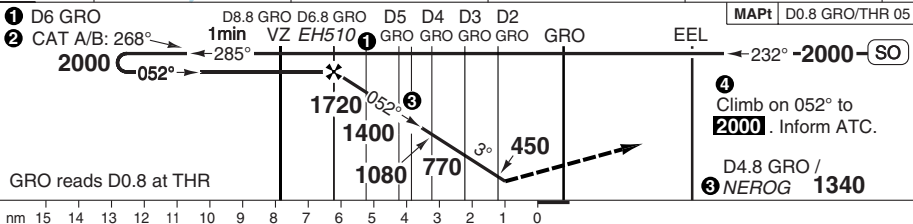
NDB 357 VZ	FAT 052°	THR Elev 13	AD Elev 17	TL ATC	TA 3000
------------	----------	-------------	------------	--------	---------



4 COM FAIL MISAP:
Climb on 052° to 2000 then turn left 320°. At 3000 proceed to [VZ]. At [VZ] hold or descend to 2000 in OUTB turn, intcp final APCH and execute proc again.



50 - 5



ACFT	NDB+DME	Circling a
A	440 (420) 1500m	450 (430) 1.5km
B		520 (500) 1.6km
C		620 (600) 2.4km
D		850 (830) 3.6km

a Southeast of AD, unless otherwise instructed by ATC.

DME GRO	3.0° ALT	LDA 1800x45 5905x147ft P 3° (70)
6.8	2000	
6	1750	
5	1420	
4	1100	
3	780	
2	460	
1.9	430	

IALS

© Navtech - ehgg05iaip00

GS	80	100	120	140	160
ROD 3.0°	430	530	640	750	850
FAF-MAPt	4:30	3:36	3:00	2:34	2:15

Change: renumbered, minima

THIS CHART IS A PART OF NAVIGRAPH NDAC AND IS INTENDED FOR FLIGHT SIMULATION USE ONLY

Eelde GRONINGEN

A horizontal timeline with major ticks at E006 20, E006 30, E006 40, E006 50, and E007 00. A blue line starts at approximately E006 25 and trends upwards to E007 00.



Climb on 232° to **2000** then turn right 320°. At **3000** proceed to **SO**. At **SO**, hold or descend to **2000** in OUTB turn, intcp final APCH and execute proc again.



DME GRO	3.0° ALT	LDA 1800x45 5905x147ft
6.3	2000	
6	1900	
5	1590	
4	1270	
3	950	
2	630	
1.4	430	

FALS

Change: renumbered, minima

THIS CHART IS A PART OF NAVIGRAPH NDAC AND IS INTENDED FOR FLIGHT SIMULATION USE ONLY

JAR-OPS Landing Minima

Eelde **GRONINGEN**

The following Minima is for Public Transport aircraft and conforms to JAR-OPS1 regulations.

STRAIGHT-IN APPROACH		C				D			
R/W	Procedure	DA/ MDA QNH ft	DH/ MDH QFE ft	RVR m	RVR No ALS m	DA/ MDA QNH ft	DH/ MDH QFE ft	RVR m	RVR No ALS m
05	VOR/DME	440	420	1400	1800	440	420	1600	2000
05	SRA 1.5nm	440	420	1400	1800	440	420	1600	2000
05	NDB/DME	430	410	1400	1800	430	410	1600	2000
23	ILS/DME	220	200	550	1000	220	200	550	1000
23	LOC/DME	440	420	1000	1800	440	420	1400	2000
23	VOR/DME	440	420	1000	1800	440	420	1400	2000
23	SRA 1.5nm	440	420	1000	1800	440	420	1400	2000
23	NDB/DME	440	420	1000	1800	440	420	1400	2000

Notes:

CIRCLING		C			D		
R/W	Procedure	MDA QNH ft	MDH QFE ft	Vis m	MDA QNH ft	MDH QFE ft	Vis m
All procs (1)		620	600	2400	850	830	3600

Notes:

(1) Southeast of AD, unless otherwise instructed by ATC.

TAKE-OFF		C	D
Runway	Facilities	m	m
05, 23	RCLL(H)+REDL(H)+Multi RVR (1)	125	150
05, 23	RCLL+REDL+Multi RVR	150	200
05, 23	RCLL+REDL	200	250
05, 23	RCL and/or REDL (2)	250	300
All	Nil (Day only)	500	500

Notes:

(1) Subject to Approval.

(2) For night operations, at least runway edge and end lights required.

JAR-OPS Landing Minima

Eelde **GRONINGEN**

The following Minima is for Public Transport aircraft and conforms to JAR-OPS1 regulations.

STRAIGHT-IN APPROACH		A				B			
R/W	Procedure	DA/ MDA QNH ft	DH/ MDH QFE ft	RVR m	RVR No ALS m	DA/ MDA QNH ft	DH/ MDH QFE ft	RVR m	RVR No ALS m
05	VOR/DME	440	420	1200	1500	440	420	1300	1500
05	SRA 1.5nm	440	420	1200	1500	440	420	1300	1500
05	NDB/DME	430	410	1200	1500	430	410	1300	1500
23	ILS/DME	220	200	550	1000	220	200	550	1000
23	LOC/DME	440	420	900	1500	440	420	1000	1500
23	VOR/DME	440	420	900	1500	440	420	1000	1500
23	SRA 1.5nm	440	420	900	1500	440	420	1000	1500
23	NDB/DME	440	420	900	1500	440	420	1000	1500

Notes:

CIRCLING		A			B		
R/W	Procedure	MDA QNH ft	MDH QFE ft	Vis m	MDA QNH ft	MDH QFE ft	Vis m
All procs (1)		450	430	1500	520	500	1600

Notes:

(1) Southeast of AD, unless otherwise instructed by ATC.

TAKE-OFF		A	B
Runway	Facilities	m	m
05, 23	RCLL(H)+REDL(H)+Multi RVR (1)	125	125
05, 23	RCLL+REDL+Multi RVR	150	150
05, 23	RCLL+REDL	200	200
05, 23	RCL and/or REDL (2)	250	250
All	Nil (Day only)	500	500

Notes:

(1) Subject to Approval.

(2) For night operations, at least runway edge and end lights required.

HELICOPTER

Eelde GRONINGEN

The following Minima is for Public Transport Helicopters and conforms to JAR-OPS3 regulations.

STRAIGHT-IN APPROACH

R/W	Procedure	DA/ MDA QNH ft	DH/ MDH QFE ft	Full ≥720 RVR m	Inter 420-719 RVR m	Basic < 420 RVR m	No ALS RVR m
05	VOR/DME	440	420	N/A	1000	1000	1000
05	SRA 1.5nm	440	420	N/A	1000	1000	1000
05	NDB/DME	440	420	N/A	1000	1000	1000
23	ILS	220	200	500	600	700	1000
23	LOC	440	420	800	1000	1000	1000
23	VOR/DME	440	420	800	1000	1000	1000
23	SRA 1.5nm	440	420	800	1000	1000	1000
23	NDB/DME	440	420	800	1000	1000	1000

Notes:

CIRCLING

R/W	Procedures	MDA QNH ft	MDH QFE ft	Vis m
23	NDB/DME (1)	460	440	800
	All other procs (1)	450	430	800

Notes:

(1) Southeast of AD, unless otherwise instructed by ATC.